



Navajo County

Community Asset Inventory



This report was prepared by the Arizona Rural Policy Institute, Northern Arizona University, partially funded under award #07-66-05876 from the Economic Development Administration, U.S. Department of Commerce. The statements, findings, conclusions, and recommendations are those of the authors and do not necessarily reflect the views of the Economic Development Administration or the U.S. Department of Commerce.

The Arizona Rural Policy Institute is also funded by the City of Flagstaff, Coconino County, and the Office of the President, Northern Arizona University

Credits

Prepared and compiled by the Arizona Hospitality Research & Resource Center, Cheryl Cothran, Director
 For the Arizona Rural Policy Institute, Michael Lainoff, Director
 Center for Business Outreach
 The W.A. Franke College of Business
 Northern Arizona University
 Flagstaff, AZ 86011

Communities in Navajo County

Community	Website	Contact Name	E-Mail Address
Navajo County	http://www.navajocountyaz.gov/	Laurie F. Stradling	laurie.stradling@navajocountyaz.gov
Show Low	http://www.showlowaz.gov/	Steve North	snorth@showlowaz.gov
Pinetop-Lakeside	http://ci.pinetop-lakeside.az.us/	Paul Esparza	pesparza@ci.pinetop-lakeside.az.us
Taylor	http://tayloraz.org/	Eric Duthie	eduthie@tayloraz.org
Snowflake	http://ci.snowflake.az.us/	Paul Watson	paulw@ci.snowflake.az.us
White Mountain Apache Tribe	http://wmat.us/	Byron McNeil	bmcneil@wmat.us
Holbrook	http://ci.holbrook.az.us/	Carlo Pilgrim	carlopilgrim@ci.holbrook.az.us
Heber-Overgaard	http://www.heberovergaard.org/	Phil Rhodes	psrhodester@frontiernet.net
Winslow	http://ci.winslow.az.us/	Jim Ferguson	jim.ferguson@ci.winslow.az.us

Websites

Arizona Hospitality Research & Resource Center: <http://home.nau.edu/ahrrc/>
 Arizona Rural Policy Institute: <http://www.franke.nau.edu/RPI/>
 Center for Business Outreach: <http://www.franke.nau.edu/businessoutreach/>
 The W.A. Franke College of Business: <http://www.franke.nau.edu/>

Researchers

Name	Title	Phone	E-Mail Address
Melinda Bradford	Research Technician	(928) 523-6205	Melinda.Bradford@nau.edu
Tim Foster	Support Systems Analyst Sr.	(928) 523-8432	Tim.Foster@nau.edu
Grace Marks	Project Director	(928) 523-1817	Grace.Marks@nau.edu

Document Layout

Jason Karcz, Support Systems Analyst Sr., AHRRC, CBO, NAU

Table of Contents

Credits	3	Private/Charter Schools	27	Federal Express.....	47
Enterprise Zone Incentives	7	Winslow	27	USPS.....	49
Economic Development Organizations.....	7	Holbrook	27		
Chambers of Commerce	7	Snowflake-Taylor	27		
Population.....	9	Show Low.....	27		
Population Statistics	9	Pinetop-Lakeside	28		
Labor Force	9	Heber-Overgaard.....	28		
Labor Force.....	9	Hon-Dah McNary.....	28		
Employment / Unemployment (2008)	9	Cibecue	28		
Unemployment Rate	9	Whiteriver.....	28		
Labor Force by Occupation.....	10	Vocational Schools.....	29		
Labor Force by Industry.....	11	NAVIT – Northern Arizona Vocational Institute of			
Age & Race	12	Technology	29		
Age Distribution (2008)	12	Northland Pioneer College.....	32		
Race Distribution (2008).....	13	Degrees.....	32		
Total Hispanic Population (2008)	13	Vocational Programs:	32		
Educational Attainment.....	14	Accreditation:	32		
Income	14	Locations.....	32		
Household Income.....	14	Fall 2007 Enrollment.....	33		
Household Income.....	15	Winslow Little Colorado Campus.....	34		
Workforce Housing	16	Holbrook Painted Desert Campus (PDC) Campus.....	35		
Housing Units (2000)	16	Snowflake/Taylor Campus	36		
Year Structure Built	16	Show Low, Pinetop-Lakeside Campus	37		
Rooms.....	17	Heber/Overgaard Campus.....	38		
Commuting to Work	17	Whiteriver Campus.....	39		
Travel Time to Work	17	Northern Arizona University	39		
Major Public Employers	18	Electricity	40		
Major Private Employers	19	Natural Gas	41		
Public Schools	20	Water	41		
Winslow	20	Wastewater.....	41		
Holbrook	20	Sanitation / Solid Waste.....	41		
Snowflake	22	Railroads	42		
Taylor.....	22	Airports	42		
Show Low.....	23	Distances from Major Markets	42		
Pinetop-Lakeside	24	Cellular Phone Service	44		
Heber-Overgaard.....	24	Banks and Credit Unions.....	44		
Hon-Dah McNary.....	24	Express Shipping Providers	45		
Cibecue	26	UPS	45		
Whiteriver.....	26	DHL	47		

Public Lands	50	Crime.....	68	RV Park & Campground Facilities.....	80
Petrified Forest National Park	50	Occurrences of Crimes (2005)	68	Winslow	80
Picnic Areas and Parks	50	Crime Index per 100,000 People	68	Holbrook	80
Lakes	52	Natural Resources.....	69	Snowflake	80
Industrial/Business Sites	53	Hotel & Motels.....	70	Show Low.....	80
Industrial Development Authority	53	Winslow	70	Pinetop-Lakeside	82
Taxes	53	Holbrook	71	Heber-Overgaard	83
Corporate Income Tax	53	Snowflake	73	Hon-Dah McNary	84
Personal Income Tax Rates.....	54	Taylor	73	Restaurants	85
Arizona Worker's Compensation	54	Show Low.....	73	Total Restaurant Figures.....	85
Unemployment Insurance	54	Pinetop-Lakeside	74	Winslow	85
Sales and Use Tax Rates (2008)	55	Heber-Overgaard	78	Holbrook	86
Property Tax Rates (2007)	55	Hon-Dah McNary	79	Snowflake	87
Weather	55	Whiteriver.....	79	Taylor	88
Annual Rainfall and Snowfall / Elevation.....	55			Show Low.....	88
Winslow	57			Pinetop-Lakeside	91
Holbrook	57			Heber-Overgaard	92
Snowflake	58			Hon-Dah McNary	92
Taylor	58			Whiteriver.....	92
Show Low.....	59				
Pinetop	59				
Lakeside	60				
Heber- Overgaard	60				
Hon-Dah McNary	61				
Cibecue	61				
Whiteriver.....	62				
Arizona Annual Precipitation	63				
Cultural Amenities	64				
Winslow	64				
Holbrook	64				
Snowflake	65				
Taylor	65				
Show Low.....	65				
Pinetop/Lakeside	65				
Pinetop/Lakeside(continued)	66				
Heber-Overgaard	66				
Whiteriver.....	66				
Medical Services / Providers.....	67				
Dentists	67				

Conference / Meeting Facilities	93
Winslow	93
Holbrook	93
Snowflake	94
Taylor	94
Show Low	94
Pinetop-Lakeside	97
Heber-Overgaard	97
Hon-Dah McNary	97

Enterprise Zone Incentives

All of Navajo County is a designated Enterprise Zone. Tax credits may total up to \$3,000 per qualified employment position over a three year period. A qualified employment position is a full-time permanent job (1,750 hours per year) paying at or above the County average wage and offering health insurance of which the employer pays at least 50%.

Economic Development Organizations

Name	Contact	Address	Phone	Website/Email
Navajo County Regional Development Council (NCRDC)	Laurie Stradling	P.O. Box 668 Holbrook, AZ 86025	Phone: (928) 524-4070 Fax: (928) 524-4239	http://www.navajocountyaz.gov/development.aspx laurie.stradling@navajocountyaz.gov
Show Low Main Street Program	Sharon Adams, Executive Director	1150 E. Deuce of Clubs, Ste. B PO Box 3044 Show Low, AZ 85902	Phone: (928) 537-8181 Fax: (928) 537-3049	http://www.showlowmainstreet.com/ showlowmainstreet@citlink.net
Pinetop-Lakeside Main Street	Connie Boggs, Executive Director	1630 East White Mountain Blvd., Ste. D-3 Pinetop, AZ 85935	Phone: (928) 367-4299 Mobile: (928) 205-8758 Fax: (928) 367-4306	http://www.PinetopLakesideMainstreet.com/ cboggs1@cableone.net

Chambers of Commerce

Community	Website	Address	Phone	Email
Winslow	http://www.winslowarizona.org/	101 E. Second St. P.O. Box 460 Winslow, AZ 86047	(928) 289-2434	winslowchamber@cableone.net
Holbrook	http://www.gotouraz.com/holbrook	100 E. Arizona St. Holbrook, AZ 86025	(928) 524-6558	Holbrook@GoTourAZ.com
Snowflake-Taylor	http://www.snowflaketaylorchamber.org/	113 N. Main St. Ste A Snowflake, Arizona 85937	(928) 536-4331	
Show Low	http://www.showlowchamberofcommerce.com/	81 E. Deuce of Clubs Show Low, AZ 85901	(928) 537-2326	
Pinetop-Lakeside	http://www.pinetoplakesidechamber.com/	PO Box 4220, Pinetop, AZ 85935 102-C W. White Mountain Blvd., Lakeside, AZ 85929	(928) 367-4290	info@pinetoplakesidechamber.com
Heber-Overgaard	http://www.heberovergaard.org/	2774 Hwy. 260 P.O. Box 1926 Overgaard, AZ 85933	(928) 535-5777	heberovergaard.coc@hotmail.com
Hon-Dah McNary Cibecue				

Whiteriver

Population

Population Statistics

Year	Winslow	Holbrook	Snowflake	Taylor	Show Low	Pinetop-Lakeside	Heber-Overgaard*	Hon-Dah McNary*	Cibecue*	Whiteriver*
2007	10,252	5,647	5,603	4,484	12,400	4,798	3,608	397	1,662	6,354

Source: Arizona Subcounty Population Projections, <http://www.azcommerce.com/econinfo/demographics/Population%20Projections.html>

* Source: ESRI Census Defined Place Data – 2008

Note all calculations are based on ESRI Census Defined Place Data proportions applied to July 1, 2008 Arizona Department of Commerce estimates

Labor Force

Labor Force

Year	Winslow	Holbrook	Snowflake	Taylor	Show Low	Pinetop-Lakeside	Heber-Overgaard	Hon-Dah McNary	Cibecue	Whiteriver
2007	3,066	2,132	2,088	1,621	4,783	2,056	1,356	102	346	1,812

Source: Arizona Subcounty population projections distributed by ESRI Census Defined Place Data proportions

Employment / Unemployment (2008)

	Winslow	Holbrook	Snowflake	Taylor	Show Low	Pinetop-Lakeside	Heber-Overgaard	Hon-Dah McNary	Cibecue	Whiteriver
Employment	2,787	1,944	1,900	1,516	4,413	1,891	1,287	76	234	1,389
Unemployment	278	187	189	105	370	165	69	26	112	423

Source: Arizona Subcounty population projections distributed by ESRI Census Defined Place Data proportions

Unemployment Rate

Year	Winslow	Holbrook	Snowflake	Taylor	Show Low	Pinetop-Lakeside	Heber-Overgaard*	Hon-Dah McNary*	Cibecue*	Whiteriver*
2007	3.0%	4.3%	3.5%	3.0%	3.2%	3.5%	1.6%	25.5%	32.4%	23.3%

Source: Arizona Department of Commerce Community Profiles, AZ Dept of Economic Security

* Source: ESRI Census Defined Place Data - 2008

Labor Force

Labor Force by Occupation

	Winslow	Holbrook	Snowflake	Taylor	Show Low	Pinetop-Lakeside	Heber-Overgaard	Hon-Dah McNary	Cibecue	Whiteriver
Management incl Farmers/Farm Mgrs	159	153	200	101	372	188	142	3	39	125
Business/Financial	36	44	30	24	89	60	39	3	0	38
Computer and Mathematical	5	16	9	0	0	15	22	0	0	0
Architecture/Engineering	29	26	27	29	21	37	5	0	0	0
Life/Physical/Social Science	25	17	42	2	14	16	19	0	0	0
Community/Social Services	47	26	16	24	152	39	11	0	0	42
Legal	6	35	13	0	62	30	11	0	0	0
Education/Training/Library	292	232	134	117	381	186	32	12	67	215
Arts/Design/Entert/Sports/Media	22	24	43	41	67	6	29	0	0	14
Healthcare Practitioner/Technician	155	49	134	32	221	188	45	0	28	116
Healthcare Support	71	35	31	20	24	25	6	0	15	33
Protective Service	418	95	36	7	158	49	19	0	13	39
Food Preparation/Serving Related	305	185	103	81	291	110	73	19	0	100
Building/Grounds Cleaning/Maint	80	95	114	24	142	126	55	17	31	77
Personal Care/Service	86	37	37	21	178	75	36	4	0	52
Sales/Related	267	292	266	227	698	276	216	23	18	197
Office/Administrative Support	309	272	258	211	580	219	163	11	13	239
Farming/Fishing/Forestry	0	8	39	32	3	2	9	0	0	66
Construction/Extraction	217	161	188	237	553	138	242	3	40	156
Installation/Maintenance/Repair	135	109	86	85	339	86	44	0	21	119
Production	69	90	106	132	122	76	37	4	10	90
Transportation/Material Moving	334	130	176	171	317	108	102	4	49	94
Total	3066	2132	2088	1621	4783	2056	1356	102	346	1812

Source: Arizona Subcounty population projections distributed by ESRI Census Defined Place Data proportions

Labor Force

Labor Force by Industry

	Winslow	Holbrook	Snowflake	Taylor	Show Low	Pinetop-Lakeside	Heber-Overgaard	Hon-Dah McNary	Cibecue	Whiteriver
Agric/Forestry/Fishing/Hunting	13	16	81	62	20	16	43	0	12	103
Mining	0	0	17	29	44	1	6	0	0	0
Construction	251	167	302	283	774	206	310	4	41	175
Manufacturing	42	50	190	189	163	61	52	4	10	115
Wholesale Trade	19	32	28	32	103	27	26	1	13	7
Retail Trade	416	311	342	259	710	302	189	11	15	156
Transportation/Warehousing	310	82	63	108	222	64	64	0	0	26
Utilities	42	115	25	20	105	36	32	0	0	12
Information	16	23	12	19	69	26	25	5	0	0
Finance/Insurance	66	46	60	35	137	37	42	0	18	10
Real Estate/Rental/Leasing	49	34	56	35	90	62	94	4	0	38
Prof/Scientific/Tech Services	19	55	51	26	152	70	35	0	0	0
Mgmt of Companies/Enterprises	0	0	14	1	0	31	0	0	0	0
Admin/Support/Waste Mgmt Svcs	74	32	24	35	107	62	35	13	0	14
Educational Services	402	383	293	178	608	268	81	28	104	263
Health Care/Social Assistance	345	126	194	85	439	283	81	0	101	298
Arts/Entertainment/Recreation	45	44	54	26	136	57	23	9	10	171
Accommodation/Food Services	317	296	150	98	368	171	71	19	0	143
Other Services (excl Publ Adm)	148	89	29	50	243	141	57	0	0	43
Public Administration	493	230	103	50	291	131	90	3	22	238
Total	3066	2132	2088	1621	4783	2056	1356	102	346	1812

Source: Arizona Subcounty population projections distributed by ESRI Census Defined Place Data proportions

Age & Race

Age Distribution (2008)

	Winslow	Holbrook	Snowflake	Taylor	Show Low	Pinetop-Lakeside	Heber-Overgaard	Hon-Dah McNary	Cibecue	Whiteriver
Under 5 Years	808	507	554	538	953	293	149	60	174	749
5-9 Years	732	481	522	470	889	301	154	48	214	731
10-14 Years	765	491	499	436	869	322	178	45	214	725
15-19 Years	864	564	492	384	830	293	200	43	190	732
20-24 Years	945	365	340	304	718	203	163	34	130	480
25-29 Years	896	373	390	330	743	207	165	24	100	470
30-34 Years	768	311	307	280	650	197	125	18	116	408
35-39 Years	708	298	288	258	702	271	123	25	100	426
40-44 Years	651	355	304	255	740	304	170	27	86	384
45-49 Years	663	428	336	264	867	381	266	24	77	363
50-54 Years	587	338	357	216	906	422	327	20	71	254
55-59 Years	504	324	324	202	881	473	335	10	71	234
60-64 Years	378	247	273	175	777	359	327	6	38	170
65-69 Years	274	205	215	141	626	277	329	5	32	103
70-74 Years	228	138	156	94	464	200	253	4	23	60
75-79 Years	166	95	103	64	345	143	178	2	12	37
80-84 Years	142	60	68	37	251	87	113	1	10	23
85+ Years	171	66	75	36	189	65	52	1	3	7

Source: Arizona Subcounty population projections distributed by ESRI Census Defined Place Data proportions

Age & Race

Race Distribution (2008)

	Winslow	Holbrook	Snowflake	Taylor	Show Low	Pinetop-Lakeside	Heber-Overgaard	Hon-Dah McNary	Cibecue	Whiteriver
White	5102 (49.77%)	3245 (57.47%)	4804 (85.73%)	3874 (86.39%)	10796 (87.07%)	4159 (86.68%)	3383 (93.76%)	32 (8.06%)	34 (2.05%)	187 (2.94%)
Black	593 (5.78%)	129 (2.29%)	28 (0.49%)	37 (0.83%)	46 (0.37%)	62 (1.29%)	2 (0.06%)	11 (2.77%)	2 (0.12%)	2 (0.03%)
American Indian/Alaska Native	2350 (22.92%)	1335 (23.64%)	379 (6.77%)	257 (5.73%)	447 (3.60%)	103 (2.15%)	78 (2.16%)	326 (82.12%)	1600 (96.27%)	6035 (94.99%)
Asian	132 (1.29%)	77 (1.36%)	28 (0.49%)	7 (0.16%)	102 (0.82%)	26 (0.55%)	8 (0.22%)	0 (0.00%)	3 (0.18%)	2 (0.03%)
Pacific Islander	10 (0.09%)	1 (0.02%)	4 (0.07%)	4 (0.08%)	12 (0.10%)	1 (0.02%)	5 (0.14%)	0 (0.00%)	0 (0.00%)	0 (0.00%)
Other Race	1595 (15.56%)	546 (9.67%)	228 (4.07%)	186 (4.14%)	684 (5.52%)	317 (6.60%)	77 (2.13%)	14 (3.53%)	4 (0.24%)	28 (0.44%)
Multi Race (2 or more)	471 (4.60%)	313 (5.55%)	132 (2.36%)	120 (2.68%)	313 (2.53%)	130 (2.70%)	55 (1.52%)	14 (3.53%)	19 (1.14%)	99 (1.56%)

Source: Arizona Subcounty population projections distributed by ESRI Census Defined Place Data proportions

Total Hispanic Population (2008)

	Winslow	Holbrook	Snowflake	Taylor	Show Low	Pinetop-Lakeside	Heber-Overgaard	Hon-Dah McNary	Cibecue	Whiteriver
Hispanic	3,422	1,521	605	585	1,741	747	295	48	31	134
Hispanic % of total population	33%	27%	11%	13%	14%	16%	8%	12%	2%	2%

Source: Arizona Subcounty population projections distributed by ESRI Census Defined Place Data proportions

Age & Race

Educational Attainment

	Winslow	Holbrook	Snowflake	Taylor	Show Low	Pinetop-Lakeside	Heber-Overgaard	Hon-Dah McNary	Cibecue	Whiteriver
Population 25+	7387	3345	3216	2350	8179	3391	2764	167	742	2985
Less than 9th Grade	462	183	153	84	346	94	101	13	166	270
9-12th Grade/No Diploma	962	428	358	242	800	301	220	41	327	936
High School Graduate	2500	1057	852	892	2545	888	1007	93	172	936
Some College/No Degree	2027	885	1007	667	2498	904	806	15	24	508
Associate Degree	557	201	278	145	707	307	236	4	0	142
Bachelor`s Degree	522	384	314	237	840	487	233	0	0	113
Grad/Professional Degree	358	207	254	84	442	409	161	1	53	78

Source: Arizona Subcounty population projections distributed by ESRI Census Defined Place Data proportions

Income

Household Income

City	Winslow	Holbrook	Snowflake	Taylor	Show Low	Pinetop-Lakeside	Heber-Overgaard	Hon-Dah McNary	Cibecue	Whiteriver
Median	\$35,351	\$40,325	\$44,999	\$40,386	\$40,288	\$45,291	\$35,305	\$15,866	\$20,729	\$25,519
<50K	61%	61%	55%	61%	59%	54%	63%	91%	90%	85%
>50K	27%	28%	33%	30%	32%	36%	31%	9%	5%	13%
>100K	13%	11%	12%	10%	9%	11%	6%	0%	5%	2%

Source: Arizona Subcounty population projections distributed by ESRI Census Defined Place Data proportions

Median household income calculated from following table

Income

Household Income

	Winslow	Holbrook	Snowflake	Taylor	Show Low	Pinetop-Lakeside	Heber-Overgaard	Hon-Dah McNary	Cibecue	Whiteriver
<\$10000	934	386	323	271	598	254	318	194	493	1425
\$10000-\$14999	585	374	246	228	490	207	255	69	319	781
\$15000-\$19999	643	458	326	265	716	262	265	41	243	566
\$20000-\$24999	985	407	333	271	671	220	318	28	81	661
\$25000-\$29999	581	347	336	235	632	321	218	0	174	331
\$30000-\$34999	640	267	496	231	711	301	232	12	57	487
\$35000-\$39999	677	323	410	298	656	227	221	4	32	409
\$40000-\$44999	513	335	373	298	542	244	234	8	44	434
\$45000-\$49999	274	252	283	231	563	210	197	4	53	293
\$50000-\$59999	944	443	813	380	1037	506	504	20	0	380
\$60000-\$74999	879	494	709	499	1250	570	436	16	44	302
\$75000-\$99999	746	521	336	268	682	417	179	0	44	140
\$100000-\$124999	852	285	446	278	605	333	142	0	40	128
\$125000-\$149999	192	108	113	66	121	44	23	0	32	17
\$150000-\$199999	109	69	43	20	74	15	28	0	4	0
\$200000-\$249999	41	36	80	3	11	32	23	0	0	0
\$250000-\$499999	21	39	3	0	18	17	12	0	0	0
\$500000+	3	6	0	0	8	0	2	0	0	0
Total	9618	5152	5672	3842	9385	4181	3608	397	1662	6354

Source: Arizona Subcounty population projections distributed by ESRI Census Defined Place Data proportions

Workforce Housing

Workforce Housing is a census category that lists the number of units in the structure, the year the structure was built, and the total number of rooms per structure

Housing Units (2000)

Units in Structure	Winslow	Holbrook	Snowflake	Taylor	Show Low	Pinetop- Lakeside	Heber- Overgaard	Hon-Dah McNary	Cibecue	Whiteriver
1-unit, detached	2,285	1,523	1,413	683	3,361	6786	2996	218	339	2,195
1-unit, attached	78	64	31	4	58	341	0	6	9	112
2 units	135	94	22	17	34	121	4	4	0	57
3 or 4 units	147	52	24	13	199	330	0	0	0	23
5 to 9 units	139	71	24	13	60	75	0	0	0	0
10 to 19 units	110	10	6	0	102	43	0	0	0	0
20 or more units	60	71	0	11	70	60	5	0	0	0
Mobile home	288	833	800	385	3,038	2093	1316	12	34	272
Boat, RV, van, etc.	0	32	47	4	153	178	103	1	0	12
Total Housing Units	3,242	2,750	2,367	1,130	7,075	10027	4424	241	382	2,671

Source: US Census

Year Structure Built

	Winslow	Holbrook	Snowflake	Taylor	Show Low	Pinetop-Lakeside	Heber- Overgaard	Hon-Dah McNary	Cibecue	Whiteriver
1999 to March 2000	62	62	106	89	357	6,786	402	4	0	38
1995 to 1998	49	121	345	156	1,289	341	940	44	73	338
1990 to 1994	110	153	179	141	815	121	615	2	36	367
1980 to 1989	394	435	575	197	1,718	330	1267	21	91	883
1970 to 1979	414	735	655	277	1,982	75	728	50	97	637
1960 to 1969	555	620	309	169	557	43	264	82	76	323
1940 to 1959	1,046	473	126	48	335	60	164	27	9	58
1939 or earlier	612	151	72	53	22	2,093	44	11	0	27

Source: US Census

Workforce Housing

Rooms

	Winslow	Holbrook	Snowflake	Taylor	Show Low	Pinetop-Lakeside	Heber- Overgaard	Hon-Dah McNary	Cibecue	Whiteriver
1 room	117	38	38	0	47	138	128	3	10	165
2 rooms	331	209	67	29	339	502	264	27	184	188
3 rooms	321	251	179	42	872	944	659	58	99	531
4 rooms	576	487	373	111	1,618	2,115	1047	64	34	433
5 rooms	736	658	503	288	1,867	2,241	1088	84	55	835
6 rooms	585	505	508	197	1,132	1,937	681	2	0	394
7 rooms	310	309	232	148	658	1,068	270	3	0	100
8 rooms	175	114	192	179	318	617	148	0	0	14
9 or more rooms	91	179	275	136	224	465	139	0	0	11

Source: US Census

Commuting to Work

	Winslow	Holbrook	Snowflake	Taylor	Show Low	Pinetop-Lakeside	Heber-Overgaard	Hon-Dah McNary	Cibecue	Whiteriver
Workers 16 years and over	3,114	2,711	2,131	1,239	4,628	4,567	1297	75	173	2,408
Car, truck, or van -- drove alone	2,294	1,952	1,537	935	3,590	3,509	910	36	125	1,481
Car, truck, or van -- carpooled	456	445	427	224	780	694	252	23	0	525
Public transportation (including taxicab)	0	0	0	5	11	7	0	8	11	132
Walked	255	191	56	6	67	96	47	8	37	200
Other means	32	38	12	15	35	32	17	0	0	62
Worked at home	77	85	99	54	145	229	71	0	0	8

Source: US Census

Travel Time to Work

(Mean travel time in minutes)

Winslow	Holbrook	Snowflake	Taylor	Show Low	Pinetop-Lakeside	Heber- Overgaard	Hon-Dah McNary	Cibecue	Whiteriver
12.9	18.1	24.1	24.0	20.6	37.8	50.6	17.9	13.6	18.2

Source: US Census

Major Public Employers

Winslow

- Arizona Department of Transportation
- Arizona State Department of Corrections
- City of Winslow
- Leupp School
- Navajo County Government
- Northland Pioneer College
- Winslow Unified School District

Holbrook

- ADOT
- Arizona Public Service
- City of Holbrook
- Holbrook Public Library
- Holbrook Unified School District
- Navajo & Apache County WIA
- Navajo County
- Northland Pioneer College
- Petrified Forest National Park
- State of Arizona

Snowflake

- Arizona Public Service
- Navajo County WIA
- Northland Pioneer College
- Snowflake Fire Department
- Snowflake Head Start
- Snowflake Public Library
- Snowflake Taylor Unified School District #5
- Snowflake/Taylor Police Department
- Town of Snowflake

Taylor

- Navajo County Maintenance Yard
- Northern Arizona Academy
- Snowflake Taylor Unified School District #5
- State of Arizona
- Town of Taylor

Show Low

- Arizona Central Credit Union
- Arizona Public Service
- City of Show Low
- Navajo County
- Northland Pioneer College
- Show Low Fire Department
- Show Low Unified School District
- State of Arizona

Pinetop-Lakeside

- Arizona Game & Fish
- Blue Ridge Unified School District
- Lakeside Fire Department
- Pinetop Fire Department
- Town of Pinetop-Lakeside
- US Forest Service
- US Postal Service

Heber-Overgaard

- Heber-Overgaard Fire Department
- Heber-Overgaard Unified School District #6
- Northland Pioneer College
- Rim Community Library
- US Forest Service

Hon-Dah McNary

- McNary Elementary School
- McNary Railroad Station

Cibecue

- Cibecue Chapter House
- Cibecue Community School
- Cibecue Trading Post

Whiteriver

- Bureau of Indian Affairs
- East Fork Lutheran School
- Fort Apache Research Library
- Fort Apache Timber Company
- Indian Health Service
- Northland Pioneer College
- White Mountain Apache Tribe
- Whiteriver Unified School District #20

Source: <http://www.showlowchamberofcommerce.com/business>

Source: <http://www.pinetoplakesidechamber.com>

Source: <http://www.gotouraz.com/Holbrook.html>

Source: www.azcommerce.com (community profiles)

Source: <http://www.city-data.com/city/Cibecue-Arizona.html>

Source: <http://www.heberovergaard.org/about.html>

Source: <http://www.snowflaketaylorchamber.org/business.php>

Major Private Employers

Winslow

- Action Medical Service
- APS Cholla Power Plant
- Bashas'
- BNSF Railway
- Cake Chevrolet Chrysler Dodge Jeep Nissan
- Denny's
- Flying J Truck Stop
- Little Colorado Medical Center
- McDonald's
- Safeway
- Taco Bell/Long John Silvers
- Wal-Mart
- Winslow Ford
- Winslow Indian Healthcare Center

Holbrook

- Arizona Public Service
- Bank of the West
- Duckwall-Alco Stores, Inc.
- North Country Health Care
- Safeway Food Stores, Inc.
- Tate's Auto Center
- Wells Fargo Bank

Snowflake

- Ace Hardware
- Arizona Public Service
- Balanced Approach Family Wellness

- Ballard Truss Plant
- Brimhall, Sand, Rock and Building Material
- C&K Home Furnishings
- Carriage House (Nursing Home)
- Cedar Ridge Veterinary Center
- Comfort Inn
- Eurofresh Hydroponics Plant
- Hannie's Apothecary
- IGA Supermarket
- Jiffy Lube
- Lumbermen's
- National Bank of Arizona
- Silver Creek Senior Center
- USI Corporation
- Wells Fargo Bank

Taylor

- 2J's Auto Repair & Sales
- Arby's
- Austin Interiors
- Bashas'
- CARQUEST
- Catalyst
- Cedar Creek Stone
- Charlie Brandt Tire co.
- Dairy Queen
- Dollar Tree
- Family Dollar
- Forest Properties
- Hatch Construction & Paving
- Horne Auto
- Kay's Supply

- Muddy Boys
- National Bank of Arizona
- Pizza Hut
- Reidhead Sand and Rock
- Silver Creek Inn
- Sonic
- Subway
- Sunrise Dairy
- Taco Bell
- Trapper's Café

Show Low

- Cable One, Inc.
- Cellular One
- Chase Bank
- Frontier Communications
- Great Western Bank
- Home Depot
- Lowe's
- National Bank of Arizona
- Safeway Stores
- Summit Healthcare Regional Medical Center
- Sunstate Bank
- Wal-Mart Super Center

Pinetop-Lakeside

- Ace Hardware
- Arizona Water Company
- Holiday Inn Express
- Navopache Electric
- Pinetop-Lakeside Sanitary District

- Safeway Stores

Heber-Overgaard

- Ace Hardware
- Arizona Water Company
- Bank of the West
- Best Western Sawmill Inn
- Bison Ranch
- Country Club Storage
- Heber IGA
- National Bank
- Overgaard RV Resort
- Pine Meadows Country Club
- Silver Creek Pharmacy
- Summit Healthcare Community Clinic

Hon-Dah McNary

- Hon-Dah Resort, Casino, Conference Center

Whiteriver

- East Fork Mission School Lutheran
- Hawley Lake Cabins
- Hon Dah Home Center
- Hon Dah Resort and Casino
- Sunrise Park Resort

Sources: See "Major Public Employers" section.

Public Schools**Winslow**

District	Name of School	Address	Phone	Enrollment	Grade Level
Northern Arizona Academy for Career Development Inc. School District	Northern Arizona Academy for Career Development- Winslow School	502 Airport Rd. Winslow, AZ 86047	(928) 289-3329	68	9 th –12 th Grade
Tolchii Kooh Inc. School District	Tolani Lake Elementary School	Navajo 24 @ Tolani Lake Winslow, AZ 86047	(928) 686-6101	27	K–7 th Grade
Winslow Unified School District	Bonnie Brennan School	100 Cochise Winslow, AZ 86047	(928) 289-3349	421	Pre-K–6 th Grade
Winslow Unified School District	Jefferson Elementary School	1100 W. Mahoney Winslow, AZ 86047	(928) 289-2497	370	K–6 th Grade
Winslow Unified School District	Washington School	300 W. Oak St. Winslow, AZ 86047	(928) 288-8600	456	K–6 th Grade
Winslow Unified School District	Winslow High School	600 East Cherry St. Winslow, AZ 86047	(928) 288-8100	854	9 th –12 th Grade
Winslow Unified School District	Winslow Junior High School	1100 Colorado Ave. Winslow, AZ 86047	(928) 289-3347	439	7 th –8 th Grade

Source: <http://www.az.localschooldirectory.com>Source: <http://www.publicschoolreview.com>**Holbrook**

District	Name of School	Address	Phone	Enrollment	Grade Level
Holbrook Unified School District	Holbrook High School	455 N. Eighth Avenue Holbrook, AZ 86025	(928) 524-2815	762	8 th –12 th Grade
Navit School District	Holbrook High School (Satellite Campus)	455 North 8Th Avenue Holbrook, AZ 86025	(928) 536-6232	583	9 th –12 th Grade
Holbrook Unified School District	Holbrook Junior High School	412 West Buffalo Holbrook, AZ 86025	(928) 524-3959	421	6 th –8 th Grade
Holbrook Unified School District	Hulet Elementary School	Sixth And Buffalo Holbrook, AZ 86025	(928) 524-6181	309	3 rd –5 th Grade
Holbrook Unified School District	Park Elementary School	453 North 7Th Street Holbrook, AZ 86025	(928) 524-6138	284	K–2 nd Grade
Rainbow Accommodation School District	Rainbow Accommodation School	298 Carlos Holbrook, AZ 86025	(928) 524-2123	14	1 st –12 th Grade

Source: <http://www.az.localschooldirectory.com>

Public Schools

Snowflake

District	Name of School	Address	Phone	Enrollment	Grade Level
Snowflake Unified School District	Highland Primary School	682 School Bus Lane Snowflake, AZ 85937	(928) 536-4156	472	K–3 rd Grade
Navit School District	Navit Courses School	1611 S. Main St Snowflake, AZ 85937	(928) 536-6232	399	11 th –12 th Grade
Snowflake Unified School District	Snowflake High School	220 S. 2Nd W Snowflake, AZ 85937	(928) 536-4156	762	9 th –12 th Grade
Snowflake Unified School District	Snowflake Intermediate School	62 West 2Nd South Snowflake, AZ 85937	(928) 536-4156	330	4 th –6 th Grade
Snowflake Unified School District	Snowflake Junior High School	1380 South Main Snowflake, AZ 85937	(928) 536-4156	376	7 th –8 th Grade

Source: <http://www.az.localschooldirectory.com>

Taylor

District	Name of School	Address	Phone	Enrollment	Grade Level
Snowflake / Taylor District	Taylor Elementary School	20 S. 300 East Taylor, AZ 85939	(928) 536-4156	338	Pre-K–3 rd Grade
Snowflake / Taylor District	Taylor Intermediate School	207 N. 500 West Taylor, AZ 85939		284	4 th –6 th Grade

Source: <http://www.az.localschooldirectory.com>

Source: Town of Taylor

Public Schools

Show Low

District	Name of School	Address	Phone	Enrollment	Grade Level
Show Low Unified School District	Clay Springs School	500 Old Linden Rd Show Low, AZ 85901	(928) 537-6150	65	K–6 th Grade
Show Low Unified School District	Linden Elementary School	1009 School House Lane Show Low, AZ 85901	(928) 537-6017	258	K–6 th Grade
Show Low Unified School District	Show Low High School	500 W. Old Linden Rd Show Low, AZ 85901	(928) 537-6200	808	9 th –12 th Grade
Navit School District	Show Low High School – Satellite Campus	500 West Old Linden Road Show Low, AZ 85901	(928) 537-6200	556	9 th –12 th Grade
Show Low Unified School District	Show Low Intermediate School	500 Old Linden Rd Show Low, AZ 85901	(928) 537-6150	426	4 th –6 th Grade
Show Low Unified School District	Show Low Junior High School	761 E. McNeil Show Low, AZ 85901	(928) 537-6100	392	7 th –8 th Grade
Show Low Unified School District	Show Preschool	500 W Old Linden Rd Show Low, AZ 85901	(520) 537-6000	31	Pre-K
Show Low Unified School District	Show Low Primary School	1350 N. Central Avenue Show Low, AZ 85901	(928) 537-6050	557	K–3 rd Grade
Navit School District	Snowflake High School – Satellite Campus	1001 West Deuce Of Clubs Show Low, AZ 85901	(928) 537-6200	514	9 th –12 th Grade
Show Low Unified School District	White Mountain Institute School	500 W. Old Linden Rd Show Low, AZ 85901	(928) 537-6200	81	9 th –12 th Grade

Source: <http://www.az.localschooldirectory.com>

Pinetop-Lakeside

District	Name of School	Address	Phone	Enrollment	Grade Level
Navit School District	Blue Ridge High School	1200 W White Mountain Blvd Pinetop-Lakeside, AZ 85929	(929) 368-6328	497	9 th -12 th Grade
Blue Ridge Unified School District	Blue Ridge Elementary School	3050 North Porter Mountain Rd., Lakeside, AZ 85929	(928) 368-6126	838	Pre-K-3 rd Grade
Blue Ridge Unified School District	Blue Ridge High School	3050 North Porter Mountain Rd., Lakeside, AZ 85929	(928) 368-6328	922	9 th -12 th Grade
Blue Ridge Unified School District	Blue Ridge Junior High School	3050 North Porter Mountain Rd., Lakeside, AZ 85929	(928) 368-2350	419	7 th -8 th Grade
Blue Ridge Unified School District	Blue Ridge Middle School	3050 North Porter Mountain Rd., Lakeside, AZ 85929	(928) 368-2300	600	4 th -6 th Grade

Source: <http://www.az.localschooldirectory.com>**Heber-Overgaard**

District	Name of School	Address	Phone	Enrollment	Grade Level
Heber-Overgaard Unified School District	Capps Elementary School	3375 Buckskin Canyon Road Heber, AZ 85928	(928) 535-4667	139	4 th -6 th Grade
Heber-Overgaard Unified School District	Mogollon High School	3450 Mustang Ave Heber, AZ 85928	(928) 535-4238	195	9 th -12 th Grade
Heber-Overgaard Unified School District	Mogollon Junior High School	3375 Buckskin Road Heber, AZ 85928	(928) 535-4667	97	7 th -8 th Grade
Heber-Overgaard Unified School District	Mountain Meadows Primary	2181 W. Country Club Dr. Overgaard, AZ 85933	(928) 535-6572	199	Pre-school-3 rd Grade

Source: <http://www.az.localschooldirectory.com>Source: <http://www.ade.az.gov/edd/report/Directory.asp>**Hon-Dah McNary**

District	Name of School	Address	Phone	Enrollment	Grade Level
Hon-Dah McNary School District	Hon-Dah McNary Elementary School	108 N. Pollack Hon-Dah McNary, AZ 85930	(928) 334-2293	173	K-8 th Grade

Source: <http://www.az.localschooldirectory.com>

Public Schools

Cibecue

District	Name of School	Address	Phone	Enrollment	Grade Level
Fort Apache Agency	Cibecue Community School	PO Box 80068 Cibecue, AZ 85911	(928) 332-2480	448	K–12 th Grade

Source: <http://schools.publicschoolsreport.com/Arizona/Cibecue/CibecueCommunitySchool.html>

Whiteriver

District	Name of School	Address	Phone	Enrollment	Grade Level
Whiteriver Unified School District	Alchesay High School	200 Falcon Way Whiteriver, AZ 85941	(928) 338-4848	697	9 th –12 th Grade
Navit School District	Alchesay High School	200 Falcon Way Whiteriver, AZ 85941	(928) 338-4848	438	9 th –12 th Grade
Whiteriver Unified School District	Canyon Day Junior High School	4621 S. 9Th Street Whiteriver, AZ 85941	(928) 338-1040	350	7 th –8 th Grade
Whiteriver Unified School District	Cradleboard School	Powerline Road Whiteriver, AZ 85941	(928) 338-1026	301	K–6 th Grade
Whiteriver Unified School District	Seven Mile School	2005 Ft. Apache Whiteriver, AZ 85941	(928) 338-1353	510	K–6 th Grade
Whiteriver Unified School District	Whiteriver Elementary School	200 Cemetery Road Whiteriver, AZ 85941	(928) 338-4138	457	Pre-K–6 th Grade

Source: <http://www.az.localschooldirectory.com>

Private/Charter Schools

Winslow

No private/charter schools

Holbrook

District	Name of School	Address	Phone	Enrollment	Grade Level
General Conference of the Seventh-Day Adventist Church (GCSDAC)	Holbrook SDA Indian School	Po Box 910 Holbrook, AZ 86025	(928) 524-6845	90	3 rd –12 th Grade
Association of Christian Schools International (ACSI)	Living Word Christian School	111 W Hopi Dr Holbrook, AZ 86025	(928) 524-6004	7	K–12 th Grade

Source: <http://www.az.localschooldirectory.com>

Source: <http://www.ade.az.gov/charterschools/search/SiteList.asp>

Snowflake-Taylor

District	Name of School	Address	Phone	Enrollment	Grade Level
Northern Arizona Academy for Career Development, Inc.	Northern Arizona Academy for Career Development - Taylor	1300 North Centennial Blvd. Taylor, AZ 85939	(928) 536-4222	58	9 th –12 th Grade

Source: <http://allpublicschools.org/schools-taylor-az.html>

Show Low

District	Name of School	Address	Phone	Enrollment	Grade Level
Founding Fathers Academies, Inc. School District	Jefferson Academy of Advanced Learning School	40 South 11Th Street Show Low, AZ 85901	(928) 537-5432	83	K–12 th Grade
Renaissance Educational Consortium, Inc. School District	Renaissance Academy – John Reeder Campus School	411 N. 18Th Place Show Low, AZ 85901	(928) 532-0195	38	K–12 th Grade
Sequoia Village School, Inc. School District	Sequoia Village School	982 Full House Lane Show Low, AZ 85901	(928) 537-1208	163	K–8 th Grade
Association of Christian Schools International (ACSI)	American Indian Christian School	924 Mission Lane # 1 Show Low, AZ 85901	(928) 537-5912	65	K–8 th Grade

Source: <http://www.az.localschooldirectory.com>

Private/Charter Schools

Pinetop-Lakeside

District	Name of School	Address	Phone	Enrollment	Grade Level
	White Mountain Montessori School	421 N. Woodland Rd., Pinetop, AZ 85935	(928) 367-1201	55	Pre-K–4 th Grade
	St. Anthony's	762 E. White Mountain Blvd. Pinetop, AZ 85935	(928) 367-3074	75	7 th –12 th Grade

Source: <http://allprivateschools.org/private-schools-pine-top-az.html>

Source: <http://www.ade.az.gov/charterschools/search/SiteList.asp>

Heber-Overgaard

No private/charter schools

Hon-Dah McNary

No private/charter schools

Cibecue

No private/charter schools

Whiteriver

District	Name of School	Address	Phone	Enrollment	Grade Level
Lutheran - Wisconsin Synod	East Fork Mission School Lutheran	P O Box 489 Whiteriver, AZ 85941	(928) 338-4455	149	K–12 th Grade

Source: <http://www.az.localschooldirectory.com>

Source: <http://www.az.localschooldirectory.com>

Vocational Schools

NAVIT – Northern Arizona Vocational Institute of Technology

Eleventh and twelfth grade students who reside within the boundaries of the eleven school districts, Blue Ridge (Pinetop-Lakeside), Mogollon (Heber-Overgaard), Round Valley (Springerville-Eagar), St. Johns, Show Low, Snowflake, Holbrook, Joseph City, Winslow, Payson, White River (Alchesay High School) may attend NAVIT. Home-schooled students who reside within the same boundaries are also eligible to attend.

Students may earn high school credit while attending NAVIT and graduate from their host high school or charter schools. In addition, students may earn community college credit from Northland Pioneer College (refer to “NAVIT Classes” on tool bar.). In addition, the Certified Nursing Assistant Program is offered at both the White Mountain Campus and the Springerville-Eagar Center.

Currently all of NAVIT’s programs are offered jointly with Northland Pioneer College; consequently, cosmetology and nail technician are taught at the White Mountain Campus of NPC. Certified Nursing Assistant is offered at both the White Mountain Campus and the Springerville-Eagar Center. The welding program is taught at the NAVIT/NPC Weld Shop located at 1320 East Thornton Road in Show Low near Empire Rental.

Source: <http://www.navit.k12.az.us/>

Superintendent

Matt Weber
 PO Box 2110
 1611 South Main
 Snowflake, AZ 85937
 Phone: (928) 536-6232
 Fax: (928) 536-7287

Winslow

Name of School	Address	Phone	Programs
Various locations	Locations are class specific from welding shops to power plants as well as some classes being offered at the local Northland Pioneer College	(928) 536-6232	<ul style="list-style-type: none"> • Accounting • BMAS • Cabinet Making • Computer Certification • Construction • Criminal Justice • Digital Video • Drafting • Early Childhood • Graphics • Marketing • Metals • Network Technology • Sports Medicine • Web Design • Woods

Source: <http://www.navit.k12.az.us/>

Vocational Schools

NAVIT – Northern Arizona Vocational Institute of Technology

Holbrook

Name of School	Address	Phone	Programs
Various locations	Locations are class specific from welding shops to power plants as well as some classes being offered at the local Northland Pioneer College	Call NAVIT District Office (928) 536-6232	<ul style="list-style-type: none"> • Accounting • Automotive Collision Repair • Audio/Visual Communication • Building Trades • Computer Aided Drafting • Computer Programming • Computer Maintenance • Computer Networking • Early Childhood Development • Web Page Design • Welding

Snowflake

Name of School	Address	Phone	Programs
NAVIT Courses	1611 S. Main St. Snowflake, AZ 85937	(928) 532-6232	<ul style="list-style-type: none"> • Agriscience • Business Management • Construction Technology • Graphic Arts • Information Technology • Interactive Digital Media

Source: <http://www.ade.az.gov/edd/report/Directory.asp>

Show Low

Name of School	Address	Phone	Programs
Snowflake High School Satellite Campus and NPC	<p>Site: 1001 West Deuce of Clubs Show Low, AZ 85901</p> <p>Mailing: 220 S. 2nd West Snowflake, AZ 85937</p>	(928) 532-6118	<ul style="list-style-type: none"> • Accounting • Business Principles • Construction Technology • Culinary Arts • Drafting • Early Childhood Education • Electronic Journalism • Fashion • Graphics • Journalism • Publication Design • Photography • Web Design

Source: <http://www.ade.az.gov/edd/report/Directory.asp>

Source: <http://www.az.localschooldirectory.com>

Vocational Schools

NAVIT – Northern Arizona Vocational Institute of Technology

Pinetop-Lakeside

Name of School	Address	Phone	Programs
Blue Ridge High School	1200 W. White Mountain Blvd. Pinetop-Lakeside, AZ 85929	(928) 532-6118	<ul style="list-style-type: none"> • Accounting • Auto • Broadcasting • Business Trades • Cabinetmaking • Culinary Arts • Drafting • Early Childhood Education • Fashion Design • Graphics • Journalism • Marketing • Web Design

Source: <http://www.az.localschooldirectory.com>

Heber-Overgaard

Name of School	Address	Phone	Programs
Mogollon High School	3450 Mustang Avenue Heber-Overgaard, AZ 85928	(928) 532-6118	<ul style="list-style-type: none"> • Automotive Repair • Cosmetology • Education Professions • Nursing • Nursing Assistant • Heavy Equipment • Medical Assistant • Networking Technician • Welding

Source: <http://www.ade.az.gov/edd/report/Directory.asp>

Whiteriver

Name of School	Address	Phone	Programs
Alchesay High School	200 Falcon Way Whiteriver, AZ 85941	(928) 338-4848	<ul style="list-style-type: none"> • Agriculture • Audio/visual • Automotive • Business • Culinary Arts • Construction • Drafting • Early Childhood

Northland Pioneer College

District Office:

103 N. First Avenue at Hopi Drive

Holbrook, AZ 86025

(928) 524-7600

www.npc.edu

Degrees

- Associate of Arts
- Associate of Arts in Elementary Education
- Associate of Business
- Associate of Science
- Associate of Applied Science
- Associate of General Studies

Vocational Programs:

Over 89 occupational programs and specialty areas.

Source: <http://www.npc.edu/>

Accreditation:

Accredited by the Higher Learning Commission of the North Central Association of Colleges and Schools Commission on Institutions of Higher Education

Source: <http://www.ncacihe.org>

Locations

Locations vary and are class specific. Please contact the local NPC campus for information.

Northland Pioneer College

Fall 2007 Enrollment

City	Enrollment
Winslow	514
Holbrook	549
Snowflake	639
Taylor	
Show Low	1591
Pinetop-Lakeside	
Heber-Overgaard	111
Whiteriver	270

Fall 2007 Enrollment

	Headcount	Gender		Ethnicity/Gender											
		Female	Male	Am. Ind.		Asian		Black		Hispanic		Other/Unkn		White	
				Female	Male	Female	Male	Female	Male	Female	Male	Female	Male	Female	Male
Navajo County	3528	2302	1216	1260	681	682	250	13	7	133	81	14	5	201	192
Internet	358	242.3	128	133	72	72	26	1	1	14	9	1	0	21	20
Totals	4629	3029	1600	1658	896	897	329	17	9	175	107	18	6	264	253

Northland Pioneer College

Winslow Little Colorado Campus

Address	Phone Number
1400 East Third Street, Winslow, AZ 86047	(928) 289-6511 (928) 289-1078 (TDD for hearing impaired)

Programs

- Admin Information Services
- Anthropology
- Art
- Biology
- Business
- Chemistry
- Computer Information Systems
- Cosmetology
- Computer technology
- Early childhood development
- Education
- Emergency medical technology
- English
- Geology
- Health science
- Honors
- Health & physical education
- Humanities
- Human services
- Math
- Medical assistant
- Music
- Nursing assistant
- Nursing
- Philosophy
- Pharmacy technician training
- Political science
- Psychology
- Small business management
- Sociology
- Spanish
- Speech, theater & film
- The learning connection
- Therapeutic massage

Northland Pioneer College

Holbrook Painted Desert Campus (PDC) Campus

Address	Phone Number
2251 Navajo Blvd. Holbrook, AZ 86025	(928) 524-7311

Programs

- Admin Information Services
- Anthropology
- Art
- Biology
- Business
- Chemistry
- Computer Information System
- Computer Technology Program
- Early Childhood Development
- Education
- Emergency Medical Services
- English
- Geology
- Health Sciences
- Health & Physical Education
- History
- Honors Colloquia
- Humanities
- Human Services
- Industrial Arts
- Industrial Training Program
- Language
- Math
- Music
- Nursing Assistant Training
- Pharmacy Technician
- Philosophy
- Photography
- Political Science
- Psychology
- Sociology
- Spanish
- Speech, Theater & Film
- The Learning Cornerstone
- Welding

Northland Pioneer College

Snowflake/Taylor Campus

Address	Phone Number
1611 S. Main St. Snowflake, AZ 85937	(928) 536-6211

Programs

- Admin Information Services
- Anthropology
- Art
- Biology
- Business
- Chemistry
- Computer Information System
- Computer Technology Program
- Drafting
- Early Childhood Development
- Education
- Emergency Medical Technology
- English
- Fire Science
- Geology
- Health Sciences
- Health & Physical Education
- History
- Honors Colloquia
- Humanities
- Industrial Arts
- Math
- Music
- Nursing Assistant Training
- Pharmacy Technician
- Philosophy
- Political Science
- Psychology
- Sociology
- Spanish
- Speech, Theater & Film
- The Learning Cornerstone

Northland Pioneer College

Show Low, Pinetop-Lakeside Campus

Address	Phone Number
1001 Deuce of Clubs Show Low, AZ 85901	(928) 532-6111

Programs

- Admin Information Services
- Anthropology
- Art
- Biology
- Business
- Chemistry
- Computer Information System
- Cosmetology
- Drafting
- Early Childhood Development
- Education
- Emergency Medical Technology
- English
- Geology
- Health Sciences
- Health & Physical Education
- History
- Honors Colloquia
- Human Development
- Humanities
- Human Services
- Industrial Arts
- Language
- Math
- Music
- Nursing Assistant Training
- Nursing
- Philosophy
- Photography
- Political Science
- Psychology
- Real Estate
- Sociology
- Spanish
- The Learning Cornerstone
- Therapeutic Massage
- Welding

Northland Pioneer College

Heber/Overgaard Campus

Address	Phone Number
3450 Mustang Ave. Heber-Overgaard, AZ 85928	(928) 535-5937

Programs

- Admin Information Services
- Anthropology
- Art
- Biology
- Business
- Chemistry
- Computer Information System
- Early Childhood Development
- Education
- Emergency Medical Technology
- English
- Health Sciences
- Health & Physical Education
- History
- Honors Colloquia
- Language
- Math
- Nursing Assistant Training
- Philosophy
- Political Science
- Psychology
- Small Business Management
- Sociology
- Spanish
- The Learning Cornerstone
- Welding

Northland Pioneer College

Whiteriver Campus

Address	Phone Number
720 S. Chief Whiteriver, AZ 85941	(928) 338-5185

Programs

- Admin Information Services
- Business
- Chemistry
- Computer Information System
- Early Childhood Development
- Education
- Emergency Medical Technology
- English
- Geology
- Health Sciences
- History
- Honors Colloquia
- Humanities
- Human Services
- Language
- Math
- Music
- Nursing Assistant Training
- Philosophy
- Political Science
- Psychology
- Sociology
- Spanish
- Speech, Theater & Film
- The Learning Cornerstone

Northern Arizona University

Community	Address	Phone	E-Mail Address
Holbrook	163 W. Hopi Drive Holbrook, AZ 86025	(928) 524-3723	Holbrook@nau.edu
Show Low	1001 W Deuce of Clubs / Box 3411 Show Low, AZ 85902	(928) 537-9228	showlow@nau.edu
Whiteriver	963 S Chief Ave/ Tech Bldg Whiteriver, AZ 85941	(928) 537-9228	whiteriver@nau.edu

Source: <http://distance.nau.edu/campuses/>

Electricity

Name	Phone
Arizona Public Service	(800) 253-9405
Navopache Electric Cooperative, Inc.	(800) 543-6324

Navopache

Billing is monthly.

Residential, Schools, Churches, and Community Halls

Rate Type	Charge	Total Rate
Standard	Customer Charge (\$/customer/month)	\$18.30
	Energy Charge (\$/kWh)	
	1–400 kWh	\$0.0574
	Over 400 kWh	\$0.0884
Time-of-Use	Customer Charge (\$/customer/month)	\$25.25
	Energy Charge (\$/kWh)	
	On-Peak	\$0.0918
	Off-Peak	\$0.0430

Source: Navopache Standard Offer – Schedule 1 (2002)

Definition of On-Peak

April–September: 8:00am–4:00pm and 6:00pm–9:00pm

October–March: 8:00am–1:00pm and 4:00pm–9:00pm

Commercial and Industrial Service

Rate Type	Charge	Total Rate
Standard	Customer Charge (\$/customer/month)	
	Secondary	\$120.00
	Primary	\$244.00
	Billing Demand Charge (\$/kW of Billing Demand)	\$8.70
	Energy Charge (\$/kWh)	
	1–300 kWh/kW	\$0.04892
	Over 300 kWh/kW	\$0.02442
Time-of-Use	Customer Charge (\$/customer/month)	
	Secondary	\$155.00
	Primary	\$244.00
	Billing Demand Charge (\$/kW of Billing Demand)	
	On-Peak	\$7.25
	Demand	\$7.20
	Energy Charge (\$/kWh)	\$0.02747

Source: Navopache Standard Offer – Schedule 2 (2002)

Definition of On-Peak

On-Peak hours shall be 8:00am–9:00pm every day.

Natural Gas

Name	Phone
Citizens Utilities Company	(800) 522-4391
Southwest Gas Corporation	(800) 766-9722
Navajo Tribal Utility Authority	(928) 729-5721
Unisource Energy Corporation	(928) 537-2914

Source: <http://www.navajocountyaz.com>

Water

Name	Phone
City of Winslow, Utilities and Environmental Services	(928) 289-4011
City of Holbrook	(928) 524-6225
Town of Taylor	(928) 536-7366
City of Show Low, Public Works Water Division	(928) 532-4108
Show Low – Pineview Water Co.	(928) 537-4858
Heber/Overgaard - Arizona Water Company	(928) 535-4469

Wastewater

Name	Address	Phone
City of Winslow, Utilities and Environmental Services		(928) 289-4011
Town of Taylor	425 Papermill Rd, Taylor, AZ	(928) 536-7366
City of Show Low, Public Works Wastewater Division	1281 E Thornton, Show Low, AZ 85901	(928) 532-4100
Pinetop-Lakeside Sanitary District	2600 W Alisa Lane, Lakeside, AZ 85929	(928) 368-5370

Sanitation / Solid Waste

Community	Name	Address	Phone
Winslow	Waste Management, Inc.		(800) 739-2783
Snowflake-Taylor	Larson Waste	951 W. 3rd North Ste. 500, Snowflake, AZ 85937	(928) 536-3398
	TBS Waste	P.O. Box 586, Taylor, AZ	(928) 536-7632
Show Low	Waste Management, Inc.	7654 Lone Pine Dam Rd, Show Low, AZ 85901	(928) 537-1060
	R & M Refuse	1900 Bourdon St # 3, Show Low, AZ 85901	(928) 537-9432
	Bulk Waste	7756d White Mountain Lake Rd., Show Low, Arizona 85901	(928) 537-7222
Pinetop-Lakeside	Waste Management, Inc.		(877) 980-2220
	R&M Refuse		(928) 537-9432
Heber-Overgaard	Larson Waste	1201 S. Alma School Rd. #11550, Mesa, AZ, 85210	(480) 988-7993

Railroads

Name	Phone
AMTRAK	(800) 872-7245
Apache Railway	(928) 536-4696
Burlington Northern Santa Fe Railway	(800) 289-2673

Source: <http://www.navajocountyaz.gov/>

Source: Profile- Navajo County, Arizona

Airports

Name	Phone	Functional Class
Winslow-Lindberg Regional	(928) 289-2429	Business Service
Holbrook Municipal	(928)524-3267	Community Service
Taylor Municipal	(928) 536-4811	Basic Service
Show Low Regional*	(928) 537-5629	Commercial Service
Whiteriver	(928) 338-5321	Community Service
Kayenta	(928) 871-6466	Basic Service
Polacca (Hopi Reservation)	No telephone checking	Community Service

* Commercial service provided by Great Lakes Airlines. Daily service to Phoenix and Denver.

Source: <http://www.navajocountyaz.gov/>

Source: Profile- Navajo County, Arizona

Distances from Major Markets

All distances are in miles and calculated as the shortest driving distance between city centers

Site	Albuquerque	Denver	El Paso	Flagstaff	Las Vegas	Los Angeles	Phoenix	Salt Lake City	Tucson
Winslow	265	711	531	58	308	522	200	568	314
Holbrook	233	679	499	90	341	555	233	551	235
Snowflake-Taylor	261	706	407	118	368	582	174	579	208
Show Low	281	727	389	138	389	548	179	599	187
Pinetop-Lakeside	242	687	387	150	400	551	182	611	193
Heber-Overgaard	278	724	427	135	386	511	141	596	241
Hon-Dah McNary	235	680	379	156	407	558	188	617	199
Cibecue	324	769	383	181	431	531	161	642	172
Whiteriver	256	702	401	172	422	552	182	633	193

Source: <http://maps.google.com/>

Cellular Phone Service

Verizon and CellularOne are the only carriers, but people can get roaming service in other areas.

Banks and Credit Unions

Name	Address	Phone Number
Bank of the West	300 N. Williamson Ave., Winslow, AZ	(929) 289-2436
Wells Fargo Bank NA: Winslow	210 W. 2 nd St., Winslow, AZ	(800) 869-3557
Winslow Santa Fe Credit Union	1021 N. Williamson Ave., Winslow, AZ	(928) 289-2962
Winslow School Employees C.U.	1520 W. 3 rd St., Winslow, AZ	(928) 289-1968
Wells Fargo Bank NA	266 Navajo Blvd., Holbrook, AZ	(800) 869-3557
Bank of the West	156 W. Hopi Dr., Holbrook, AZ	(928) 524-3925
Snowflake Mill Federal C.U.	216 S. Main St., Snowflake, AZ	(928) 526-7484
National Bank of Arizona	718 N. Main St., Taylor, AZ	(928) 536-2143
Chase Bank	400 N. White Mountain Rd., Show Low, AZ	(928) 537-4311
National Bank of Arizona	902 E. Deuce of Clubs, Show Low, A	(928) 537-2933
Great Western Bank	3051 S. White Mountain Rd., Show Low, AZ	(928) 537-8114
Bank of America	1001 E. Deuce of Clubs, Show Low, AZ	(928) 537-7425
Arizona Central Credit Union	4451 S. White Mountain Rd., Show Low, AZ	(928) 532-8440
National Bank of Arizona	1820 E. White Mountain Rd., Pinetop, AZ	(928) 367-0550
Wells Fargo Bank NA	1551 E White Mountain Blvd, Pinetop, AZ	(800) 869-3557
Compass Bank	781 E White Mountain Blvd, Pinetop, AZ	(928) 367-4177
Chase Bank	116 W. White Mountain Blvd., Lakeside, AZ	(928) 367-0180
Bank of the West	1945 Hwy 260, Heber, AZ	(928) 535-5351
National Bank of Arizona	2940 Hwy 260, Overgaard, AZ	(928) 535-4414

Source: <http://dexknows.com>

Source: <http://www.google.com/>

Source: <http://yellowpages.com>

Express Shipping Providers

UPS

Location	Address	Hours of Operation	Pickup Hours (Air)	Pickup Hours (Ground)
UPS Drop Box Flying J Truck Stop	400 Transcon Ln Winslow, AZ 86047	UPS Letters and Paks accepted 24 hours/day.	Mon-Fri: 3:30pm; Sat: No Air Pickup	Mon-Fri: 3:30pm
UPS Drop Box Super America Truckstop	2201 N. Park Dr Winslow, AZ 86047	UPS Letters and Paks accepted 24 hours/day.	Mon-Fri: 3:15pm; Sat: No Air Pickup	Mon-Fri: 3:15pm
UPS Drop Box Drop Box At UPS Location	110 W Hermosa Holbrook, AZ 86025	UPS Letters and Paks accepted 24 hours/day.	Mon-Fri: 4:15pm; Sat: No Air Pickup	Mon-Fri: 4:15pm
UPS Customer Center Staffed Location	110 W Hermosa Holbrook, AZ 86025	Mon-Fri: 4:00pm-5:30pm; Sat, Sun: Closed	Mon-Fri: 5:00pm; Sat: No Air Pickup	Mon-Fri: 5:00pm
UPS Drop Box Shell Fuel Express Truckstop	3747 Express Dr Holbrook, AZ 86025	UPS Letters and Paks accepted 24 hours/day.	Mon-Fri: 3:45pm; Sat: No Air Pickup	Mon-Fri: 3:45pm
UPS Drop Box Hopi Travel Plaza	77 N Highway 77 Holbrook, AZ 86025	UPS Letters and Paks accepted 24 hours/day.	Mon-Fri: 3:45pm; Sat: No Air Pickup	Mon-Fri: 3:45pm
Authorized Shipping Outlet Complete office Repair	815 N Main St Taylor, AZ 85939 928-536-3223	Mon-Fri: 9:00am-5:00pm; Sat, Sun: Closed	Mon-Fri: 3:00pm; Sat: No Air Pickup	Mon-Fri: 3:00pm
UPS Customer Center Staffed Location	11 N 11th St Show Low, AZ 85901 800-742-5877	Mon-Fri: 4:00pm-6:00pm; Sat, Sun: Closed	Mon-Fri: 5:00pm; Sat: No Air Pickup	Mon-Fri: 6:00pm
UPS Drop Box Drop Box At UPS Location	11 N 11th St Show Low, AZ 85901	UPS Letters and Paks accepted 24 hours/day.	Mon-Fri: 4:55pm; Sat: No Air Pickup	Mon-Fri: 4:55pm
UPS Drop Box First American Title	1801 W. Deuce of Clubs Show Low, AZ 85901	UPS Letters and Paks accepted 24 hours/day.	Mon-Fri: 4:55pm; Sat: No Air Pickup	Mon-Fri: 4:55pm
UPS Drop Box Transnation Title	1500 E Woolford Show Low, AZ 85901	UPS Letters and Paks accepted 24 hours/day.	Mon-Fri: 4:45pm; Sat: No Air Pickup	Mon-Fri: 4:45pm
UPS Drop Box The Village Center	674 E White Mountain Blvd Pinetop, AZ 85935	UPS Letters and Paks accepted 24 hours/day.	Mon-Fri: 4:15pm; Sat: No Air Pickup	Mon-Fri: 4:15pm
UPS Drop Box Transnation Title	1191 E White Mountain Blvd Pinetop, AZ 85935	UPS Letters and Paks accepted 24 hours/day.	Mon-Fri: 4:00pm; Sat: No Air Pickup	Mon-Fri: 4:00pm
UPS Drop Box Rim Country Plaza	4672 W Maverick Ln Lakeside, AZ 85929	UPS Letters and Paks accepted 24 hours/day.	Mon-Fri: 4:00pm; Sat: No Air Pickup	Mon-Fri: 4:00pm
UPS Drop Box Maverick Center	4720 W Maverick Ln Lakeside, AZ 85929	UPS Letters and Paks accepted 24 hours/day.	Mon-Fri: 4:00pm; Sat: No Air Pickup	Mon-Fri: 4:00pm
Authorized Shipping Outlet Mail Copy Plus	20 E White Mountain Blvd Lakeside, AZ 85929	Mon-Fri: 8:00am-7:00pm; Sat: 10:00am-4:00pm;	Mon-Fri: 4:00pm; Sat: No Air Pickup	Mon-Fri: 4:00pm

928-367-6245

Sun: Closed

Source: <http://www.ups.com/>

1-800-PICK-UPS (742-5877)

Express Shipping Providers

UPS (continued)

Location	Address	Hours of Operation	Pickup Hours (Air)	Pickup Hours (Ground)
UPS Drop Box Century 21 Bldg	4830 Highway 260 Lakeside, AZ 85929	UPS Letters and Paks accepted 24 hours/day.	Mon-Fri: 4:00pm; Sat: No Air Pickup	Mon-Fri: 4:00pm
UPS Drop Box Sawmill Point	1879 Highway 260 Heber, AZ 85928	UPS Letters and Paks accepted 24 hours/day.	Mon-Fri: 3:15pm; Sat: No Air Pickup	Mon-Fri: 3:15pm
UPS Shipping Outlet	2824 Hwy 260 Overgaard, AZ	Mon-Fri: 9:00am-5:00pm Sat-Sun: Closed	No Air Pickup	Mon-Fri: 2:00pm

Source: <http://www.ups.com/>

1-800-PICK-UPS (742-5877)

DHL

Location	Address	Latest Drop-Off
Great Business Solutions	145 N White Mountain Rd Show Low AZ 85901	Mon-Fri 11:00 AM
Walgreens 5090	5160 S. White Mountain Rd Show Low AZ 85901	Mon-Fri 11:00 AM
Mail Copy Plus	20 E White Mountain Blvd Lakeside AZ 85929	Mon-Fri 11:00 AM

Source: <http://www.dhl.com/>

Federal Express

Location	Address	Hours of Operation	Latest Express Drop-Off	Latest Ground Drop-Off
Flying J Truck Stop - Outside	400 Transcon Lane Winslow, AZ 86047		Mon-Fri 3:30 PM	
Love's Country St - Outside	4703 Main St Joseph City, AZ 86032		Mon-Fri 3:30 PM	
Woody's Food Store #118 - Outside	950 Navajo Blvd Holbrook, AZ 86025	Mon-Fri 8:00 AM-7:00 PM Sat-Sun 10:00 AM-4:00 PM	Mon-Fri 1:45 PM	
Navajo County Gov't Comp - Inside	100 E Carter Holbrook, AZ 86025		Mon-Fri 1:00 PM	
Bashas - Outside	650 N Main Taylor, AZ 85939		Mon-Fri 9:15 AM	

Source: <http://www.fedex.com/> 1-800-Go.FedEx (1-800-463-3339)

Express Shipping Providers

Federal Express (continued)

Location	Address	Hours of Operation	Latest Express Drop-Off	Latest Ground Drop-Off
FedEx - Outside	1560 E Thornton Show Low, AZ 85901		Mon-Fri 10:30 AM	
Double D Furniture Center - Outside	161 E Deuce of Clubs Show Low, AZ 85901		Mon-Fri 9:45 AM	
Mail Copy Plus	20 E White Mountain Blvd, Suite A5 Lakeside, AZ 85929 (928) 367-6245		Mon-Fri 9:30 AM	Mon-Fri 4:00 PM
Village Center - Outside	21 E White Mountain Blvd Lakeside, AZ 85929		Mon-Fri 9:30 AM	
Eze Storage & Moving	3652 W White Mt Blvd Lakeside, AZ 85929 (928) 368-6060	Mon-Sun 8:00 AM-6:00 PM	Mon-Fri 10:00 AM	Mon-Fri 8:00 AM

Source: <http://www.fedex.com/> 1-800-Go.FedEx (1-800-463-3339)

USPS

Location	Address	Hours of Operation
Winslow	223 N. Williamson Ave., Winslow, AZ 86047-3886	M-F: 9:00 - 5:00 PM; SAT: 10:00 - 1:00 PM
Winslow - Cpu Teesto Chapter House	HC 52, Box B, Winslow, AZ 86047-9408	M-F: 1:00 - 5:00 PM
Holbrook	100 W. Erie St., Holbrook, AZ 86025-9998	M-F: 9:00 - 5:00 PM; SAT: 10:00 - 12:00 PM
Snowflake	761 S. 1st St., W., Snowflake, AZ 85937-5579	M-F: 9:00 - 4:30 PM
Taylor	25 E. Main St., Taylor, AZ 85939-9997	M-F: 8:00 - 4:45 PM
Show Low	191 W. Deuce of Clubs, Show Low, AZ 85901-9998	M-F: 8:30 - 5:00 PM; SAT: 9:00 - 12:00 PM
Pinetop-Lakeside	712 E. White Mountain Blvd., Pinetop, AZ 85955-7067	M-F: 8:00 - 5:00 PM; SAT: 9:00 - 12:00 PM
Pinetop-Lakeside	1615 W. Jackson Ln., Lakeside, AZ 85829-7300	M-F: 9:00 - 5:00 PM
Heber- Overgaard	3410 Buckskin Canyon Rd., Heber, AZ 85826-9600	M-F: 8:30 - 12:00, 1:00 - 4:30
Heber- Overgaard	2521 State Highway 250, Overgaard, AZ 85933-9997	M-F: 8:00 - 5:00 PM
Hon-Dah McNary	14 Cady St., Hon-Dah McNary, AZ 85930-9997	M-F: 8:00 - 1:00, 2:00 - 4:30
Cibecue	221 S. Cooley Rd., Cibecue, AZ 85911-5800	M-F: 8:00 - 1:00, 2:00 - 5:00
Whiteriver	1025 S. Chief Ave., Whiteriver, AZ 85941-9997	M-TH: 8:30 - 4:30; FRI: 8:30 - 4:00

Source: http://www.switchboard.com/_1_W84T1FO42JC3J_usps.1355/dir/

USPS Contact information: <http://www.usps.com/> (800) ASK-USPS

Public Lands

Petrified Forest National Park

Apache and Navajo Counties, Arizona

- Nearest City: Holbrook, Arizona
- Coordinates: 35 degrees 03'58" North 109 degrees 46'51" West
- Area: 218.553 acres (341.5 sq. mi./885 km)
- Established: January 1, 1962
- Visitors: 581,681 (2006)
- Governing Body: National Park Service

Public Lands

Picnic Areas and Parks

Name	Location	Closest City
9/11 Memorial	East Route 66/Transcon Lane	Winslow, AZ
Bulldog Plaza	North Park Drive/Cherry Street	Winslow, AZ
Clear Creek Reservoir	Highway 99 Add (4.3 miles SSE).	Winslow, AZ
East End Park	East Route 66	Winslow, AZ
Father Seramur Park	Central Street/Francis Avenue	Winslow, AZ
First Street Linear Park and Pedestrian/Bicycle Path	First Street/ Kinsley Avenue to Hicks Avenue	Winslow, AZ
Hubbell Trading Post Grounds and Performance Area	Second Street/Campbell Avenue	Winslow, AZ
Little Painted Desert county park	15 miles east of Winslow	Winslow, AZ
McHood Park	Highway 99, AZ (4.3 miles SSE)	Winslow, AZ
Ruby Channel – Multi-purpose Ball field	Oak Street/Interstate-40	Winslow, AZ
Southside Park	Jefferson Street/Virginia Avenue	Winslow, AZ
Standin' on the Corner Park/Route 66 Plaza	Second Street/Kinsley Avenue	Winslow, AZ
Triangle Park	Fleming Street/Elm Street	Winslow, AZ
Winslow City Park	Cherry Street/Colorado Avenue	Winslow, AZ
Hunt Park	Interstate 40, <0.1 mile	Holbrook, AZ
Lewis Park	Corner of Strayhand Street and Lewis Drive	Holbrook, AZ
Lisitzky Park	Desert View Drive	Holbrook, AZ
Living West Park	Corner of Navajo Boulevard and Hopi Drive	Holbrook, AZ
West End Park	1400 W block of Hopi Drive	Holbrook, AZ

Source: http://en.wikipedia.org/wiki/Petrified_Forest_National_Park

Source: <http://www.wmonline.com/ATTRACT/trails/woodland.htm>

Source: <http://arizona.hometownlocator.com/maps/feature-map>

Public Lands

Picnic Areas and Parks (continued)

Freeman Park	Paper Mill Road, Taylor, AZ (W SR 77 0.5 miles)	Taylor, AZ
Rodeo Park	W on SR 77	Taylor, AZ
Taylor Municipal Park	Center Street, Taylor, AZ (E SR 77 1 mile)	Taylor, AZ
Festival Market Place	Deuce of Clubs between 9th & 11th St.	Show Low, AZ
Fool Hollow Lake Park	Clark Road and Old Linden Road (1 mile NE)	Show Low, AZ
Frontier Park	N. 9th Pl., north of Deuce of Clubs	Show Low, AZ
Gary Archibeque Memorial Park	Between 4th & 5th St. and Hunning & McNeil	Show Low, AZ
McCarty Park	Whipple & 24th Dr.	Show Low, AZ
Nikolaus Homestead Park	Mills off of 11th St., between Owens and Hunning	Show Low, AZ
Show Low City Park	U.S. 60 & South Clark Road. Show Low, AZ (1.9 miles ENE)	Show Low, AZ
Show Low Lake Park	S. White Mountain Road and Show Low Lake Road (1 mile SE)	Show Low, AZ
Mountain Meadow Recreational Complex	Woodland Road	Pinetop-Lakeside, AZ
Woodland Lake Park	Woodland Lake Road, Pinetop-Lakeside	Pinetop-Lakeside, AZ
Phoenix Park	Overgaard, AZ (4.7 miles NNW)	Heber-Overgaard, AZ
Tall Timbers County Park	Overgaard, AZ, Heber, AZ (2.7 miles NW)	Heber-Overgaard, AZ
Walker Park	Old Verde Road, Overgaard, AZ (6.7 miles NNE)	Heber-Overgaard, AZ

Source: http://en.wikipedia.org/wiki/Petrified_Forest_National_Park

Source: <http://arizona.hometownlocator.com/maps/feature-map>

Source: <http://www.wmonline.com/ATTRACT/trails/woodland.htm>

Public Lands

Lakes

Name	Location/Closest City
Amos Lake	Indian Pine
Aspen Lake	O W Point
Baca Lake	Brookbank Point
Big Dry Lake	Taylor
Big Water	Toh NE Zhonnie Spring
Bills Lake	Show Low North
Black Canyon Lake	Brookbank Point
Black Rock Pond	Red Slide Peak
Blevins Lake	Aripine
Carr Lake	Padilla Tank
Cedar Lake	Second Knolls
Chuck Box Lake	Chediski Peak
Clear Creek Reservoir	Winslow
Cow Lake	Silver Springs
Cub Lake	Show Low South
Deep Lake	Show Low North
Donkey Lake	Pepper Canyon
Dry Lake	Faught Ridge
Dry Lake	Baby Rocks
Dry Lake	Dry Lake NW
Duck Lake	Hawley Lake West
Fool Hollow Lake	Show Low
Forest Lake	Cliff Rose Hill
Gambler Lake	Cliff Rose Hill
Hidden Lake	Second Knolls
Hidden Lake	Brookbank Point
Lake Maho	Keams Canyon
Little Mormon Lake	Silver Springs
Little Nelson Lake	Hanks Draw
Little Rock Lake	Potato Wash South
Little Water	Cliff Rose Hill

Name	Location/Closest City
Long Lake	Second Knolls
Long Lake	Silver Springs
Louse Lake	Pepper Canyon
Martinez Lake	Silver Springs
Mexican Lake	Silver Springs
Ned Lake	Show Low North
Nyce Lake	Chediski Peak
Pepper Lake	Pepper Canyon
Petes Retreat Pond	Show Low South
Pintail Lake	Show Low North
Pothole	Second Knolls
Pryce Lake	Pepper Canyon
Pumpkin Lake	Pepper Canyon
Section Two Lake	Silver Springs
Show Low Lake	Show Low
Sink Hole Lake	Show Low North
Tatum Baca	Brookbank Point
Telephone Lake	Show Low North
Tobenayoli Pond	Tovar Mesa East
Turkey Lake	Pinedale
Twin Lakes	Brookbank Point
Twin Lakes	Sheepskin Wash
Wagon Wheel Lake	Pepper Canyon
Walker Lake	Big Pug Tank
West Blue Lake	Brookbank Point
Whipple Lake	Silver Springs
White Lake	Show Low North
Whitetail Lake	Pepper Canyon
Wildhorse Lake	Brookbank Point
Woodruff Lake	Woodruff

Source: <http://arizona.hometownlocator.com/features/physical,class,lake,scfi>

Industrial/Business Sites

Area	Organization	Phone	URL
Winslow	City of Winslow	(928) 289-2422	
City of Holbrook	Department of Economic Development	(928) 524-6225	
Snowflake	Town of Snowflake	(928) 536-7103	
Taylor	Town of Taylor	(928) 536-7366	
Show Low	City of Show Low	(928) 532-4124	http://www.arizonapropector.com/ed.asp?cmd=findsites&maxx=2462970.54286065&minx=-1062438.54986702&miny=121845.174398672&maxy=2195615.22894436&p=1&t=1&x1=&s=1400&k=0&thetype=all&units=Sqft&CITY1=Show+Low&Submit=Search+Properties
Pinetop-Lakeside	Town of Pinetop-Lakeside	(928) 368-8696	
White Mountain Apache Tribe Indian Reservation	EDA Planning Office, White Mountain Apache Tribe	(928) 338-2462	
Hopi Indian Reservation	Hopi Tribe, Office of Research and Planning	(928) 734-2441, ext. 242	

Source: <http://www.navajocountyaz.gov>

Industrial Development Authority

Navajo County

Mr. Stewart Szink, President
 819 West Florida
 Holbrook, AZ 86025
 (520) 524-3097

City of Winslow

Mr. Joel B. McHood, President
 714 West Hillview Street
 Winslow, AZ 86047
 (928) 289-4040
 Fax: (928) 289-2124

Source: <http://www.navajocountyaz.gov>

Source: <http://www.google.com/search?hl=en&q=Industrial+Development+Authority+of+Navajo+County&btnG=Google+Search>

Taxes

Corporate Income Tax

Statewide rate 6.968% of net income or \$50, whichever is greater.

Source: <http://www.taxfoundation.org/taxdata/>

Personal Income Tax Rates

Brackets	Range
\$0-\$10,000	2.59%
\$10,001-\$25,000	2.88%
\$25,001-\$50,000	3.36%
\$50,001-\$150,000	4.24%
\$150,000+	4.54%

Source: <http://www.taxfoundation.org/taxdata/>

Arizona Worker's Compensation

Cost per \$100 payroll ranges from \$0.31 to \$31.10 depending on Job Code

Source: NCCI Holdings, Inc (Scopes Manual) (<http://www.ncci.com/>)

Unemployment Insurance

Tax rates range from 0.02% to 5.40% on the first \$7,000 in wages per employee/per calendar year. Average rate in 2008 is 1.39%. New Employer rate is 2.00%

Source: <http://www.azdes.gov/esa/uitax/uihome.asp>

Taxes

Sales and Use Tax Rates (2008)

	Winslow	Holbrook	Snowflake	Taylor	Show Low	Pinetop-Lakeside	Heber- Overgaard	Hon-Dah McNary	Cibecue	Whiteriver
State	5.60%	5.60%	5.60%	5.60%	5.60%	5.60%	5.60%	-	-	-
Local	3.00%	3.00%	2.00%	2.00%	2.00%	2.50%	-	3.00%	3.00%	3.00%
County	0.50%	0.50%	0.50%	0.50%	0.50%	0.50%	0.50%	-	-	-
Total	9.10%	9.10%	8.10%	8.10%	8.10%	8.60%	6.10%	3.00%	3.00%	3.00%
Bed	2.00%	2.00%	4.00%	0.00%	0.00%	3.00%	-	-	-	-

Note: The state tax rate for transient lodging (hotel/motel) is 5.5%

The White Mountain Apache Tribe applies a 3.0% Business Activity Tax to sales on tribal lands.

Source: <http://www.azdor.gov>

Source: White Mountain Apache Tribe

Source: <http://www.modelcitytaxcode.org>

Property Tax Rates (2007)

	Winslow	Holbrook	Snowflake	Taylor	Show Low	Pinetop-Lakeside	Heber- Overgaard	Hon-Dah McNary	Cibecue	Whiteriver
Elementary/High Schools	6.81	6.05	4.16	4.16	4.36	5.01	4.32	-	-	0.05
City/Fire District	0.89	0.28	0	0	2.02	2.11	1.80	-	-	-
Countywide	2.67	2.67	2.67	2.67	2.67	2.67	2.67	-	-	-
Total	10.37	9.00	6.83	6.83	9.05	9.79	8.79	-	-	-

Note: Tax Rate in dollars per \$100 assessed valuation

Source: Community Profiles from www.azcommerce.com

Source: Navajo County Assessor's Office

Source: Arizona Tax Research Association

Weather

Annual Rainfall and Snowfall / Elevation

	Winslow	Holbrook	Snowflake	Taylor	Show Low	Pinetop	Lakeside	Heber	Overgaard	Hon-Dah McNary	Cibecue	Whiteriver
Rainfall in Inches	7.76	9.6	12.17	12.3	14.54	22.6	17.9	12.3	18	26.5	18.5	18.3
Snowfall in Inches	11.4	9.1	17.8	18.2	41.4	47.2	28.1	16.3	42	92.8	18.5	17.9

Elevation	4854 ft	5082 ft	5579 ft	5595 ft	6412 ft	6950 ft	6950 ft	6624 ft	6624 ft	6950 ft	5000 ft	5080 ft
(Mean aboveSea Level)	1479 m	1549 m	1700 m	1705 m	1954.4 m	2118 m	2118 m	2018 m	2018 m	2118 m	1524 m	1548 m

Source: <http://www.wrcc.dri.edu>
Source: <http://www.weatherbase.com>

Weather

Winslow

Month	Avg. High	Avg. Low	Mean	Avg. Precip	Record High	Record Low
January	47°F	21°F	34°F	0.46 in.	75°F (1971)	-18°F (1937)
February	55°F	26°F	40°F	0.53 in.	78°F (1957)	-9°F (1922)
March	61°F	31°F	46°F	0.61 in.	85°F (1989)	-2°F (2002)
April	70°F	37°F	53°F	0.27 in.	92°F (1943)	14°F (1928)
May	79°F	45°F	62°F	0.36 in.	101°F (2002)	23°F (1964)
June	90°F	54°F	72°F	0.30 in.	106°F (1970)	29°F (1919)
July	93°F	62°F	78°F	1.18 in.	109°F (1971)	42°F (1928)
August	90°F	61°F	76°F	1.31 in.	104°F (1928)	41°F (1968)
September	84°F	53°F	68°F	1.02 in.	99°F (1950)	29°F (1924)
October	72°F	40°F	56°F	0.90 in.	93°F (1972)	13°F (1970)
November	58°F	29°F	43°F	0.55 in.	81°F (2006)	-9°F (1919)
December	47°F	21°F	34°F	0.54 in.	74°F (1958)	-12°F (1967)

Source: <http://www.weather.com/outlook/travel/businesstraveler/wxclimatology/monthly/86047>

Holbrook

Month	Avg. High	Avg. Low	Mean	Avg. Precip	Record High	Record Low
January	51°F	21°F	36°F	0.71 in.	74°F (1994)	-20°F (1937)
February	58°F	25°F	42°F	0.66 in.	99°F (1903)	-19°F (1964)
March	65°F	30°F	48°F	0.72 in.	89°F (1921)	2°F (1966)
April	73°F	36°F	55°F	0.37 in.	93°F (1989)	10°F (1967)
May	82°F	43°F	63°F	0.38 in.	101°F (1996)	13°F (1967)
June	92°F	51°F	72°F	0.20 in.	108°F (1918)	30°F (1965)
July	95°F	60°F	78°F	1.17 in.	106°F (1998)	41°F (1987)
August	92°F	59°F	76°F	1.51 in.	109°F (1955)	36°F (1968)
September	86°F	51°F	69°F	1.18 in.	106°F (1955)	18°F (1970)
October	75°F	38°F	57°F	1.07 in.	95°F (1996)	15°F (1975)
November	62°F	28°F	45°F	0.66 in.	89°F (1924)	-10°F (1976)
December	51°F	21°F	36°F	0.57 in.	78°F (1995)	-21°F (1898)

Source: <http://www.weather.com/outlook/travel/businesstraveler/wxclimatology/monthly/86025>

Weather

Snowflake

Month	Avg. High	Avg. Low	Mean	Avg. Precip	Record High	Record Low
January	49°F	20°F	34°F	0.73 in.	79°F (1943)	-30°F (1937)
February	55°F	23°F	39°F	0.72 in.	78°F (1914)	-17°F (1956)
March	61°F	28°F	44°F	1.01 in.	84°F (2004)	-5°F (1935)
April	69°F	33°F	51°F	0.42 in.	92°F (1943)	3°F (1969)
May	77°F	40°F	59°F	0.59 in.	98°F (2000)	17°F (1968)
June	87°F	48°F	68°F	0.33 in.	102°F (1970)	20°F (1919)
July	90°F	56°F	73°F	1.75 in.	104°F (2003)	27°F (1936)
August	87°F	55°F	71°F	2.44 in.	102°F (1914)	28°F (1915)
September	82°F	48°F	65°F	1.64 in.	98°F (2000)	22°F (1924)
October	71°F	36°F	54°F	1.25 in.	90°F (2003)	11°F (1919)
November	58°F	26°F	42°F	0.93 in.	90°F (1916)	-17°F (1931)
December	49°F	20°F	34°F	0.89 in.	75°F (1958)	-24°F (1968)

Source: <http://www.weather.com/outlook/travel/businesstraveler/wxclimatology/monthly/85937>

Taylor

Month	Avg. High	Avg. Low	Mean	Avg. Precip	Record High	Record Low
January	49°F	20°F	34°F	0.73 in.	79°F (1943)	-30°F (1937)
February	55°F	23°F	39°F	0.72 in.	78°F (1914)	-17°F (1956)
March	61°F	28°F	44°F	1.01 in.	84°F (2004)	-5°F (1935)
April	69°F	33°F	51°F	0.42 in.	92°F (1943)	3°F (1969)
May	77°F	40°F	59°F	0.59 in.	98°F (2000)	17°F (1968)
June	87°F	48°F	68°F	0.33 in.	102°F (1970)	20°F (1919)
July	90°F	56°F	73°F	1.75 in.	104°F (2003)	27°F (1936)
August	87°F	55°F	71°F	2.44 in.	102°F (1914)	28°F (1915)
September	82°F	48°F	65°F	1.64 in.	98°F (2000)	22°F (1924)
October	71°F	36°F	54°F	1.25 in.	90°F (2003)	11°F (1919)
November	58°F	26°F	42°F	0.93 in.	90°F (1916)	-17°F (1931)
December	49°F	20°F	34°F	0.89 in.	75°F (1958)	-24°F (1968)

Source: <http://www.weather.com/outlook/travel/businesstraveler/wxclimatology/monthly/85939>

Weather

Show Low

Month	Avg. High	Avg. Low	Mean	Avg. Precip	Record High	Record Low
January	47°F	23°F	35°F	1.32 in.	69°F (2000)	-25°F (1971)
February	52°F	26°F	39°F	1.37 in.	71°F (1989)	-3°F (1990)
March	58°F	31°F	45°F	1.45 in.	80°F (2004)	-7°F (1966)
April	66°F	37°F	51°F	0.68 in.	84°F (2000)	4°F (1975)
May	74°F	45°F	60°F	0.72 in.	100°F (1969)	14°F (1967)
June	85°F	53°F	69°F	0.46 in.	98°F (1973)	30°F (1974)
July	87°F	59°F	73°F	2.18 in.	100°F (2003)	38°F (1974)
August	84°F	58°F	71°F	3.30 in.	95°F (1995)	37°F (1968)
September	79°F	51°F	65°F	1.78 in.	93°F (1979)	25°F (1968)
October	69°F	40°F	54°F	1.76 in.	86°F (1979)	12°F (1975)
November	56°F	30°F	43°F	1.52 in.	77°F (1980)	-14°F (1976)
December	48°F	23°F	35°F	1.59 in.	68°F (2003)	-22°F (1990)

Source: <http://www.weather.com/outlook/travel/businesstraveler/wxclimatology/monthly/85901>

Pinetop

Month	Avg. High	Avg. Low	Mean	Avg. Precip	Record High	Record Low
January	42°F	19°F	31°F	2.79 in.	68°F (1986)	-23°F (1949)
February	45°F	22°F	34°F	2.47 in.	72°F (1981)	-18°F (1939)
March	49°F	25°F	37°F	3.07 in.	74°F (2004)	-13°F (1948)
April	58°F	30°F	44°F	1.32 in.	80°F (2000)	0°F (1949)
May	66°F	37°F	52°F	0.87 in.	89°F (2002)	8°F (1950)
June	77°F	45°F	61°F	0.84 in.	98°F (1974)	20°F (1950)
July	78°F	52°F	65°F	3.22 in.	98°F (1985)	30°F (1935)
August	75°F	51°F	63°F	4.04 in.	91°F (1962)	32°F (1956)
September	71°F	45°F	58°F	2.49 in.	89°F (1948)	21°F (1945)
October	62°F	35°F	49°F	2.63 in.	88°F (1979)	6°F (1971)
November	50°F	26°F	38°F	2.32 in.	79°F (1980)	-5°F (1976)
December	43°F	20°F	32°F	2.40 in.	73°F (1980)	-18°F (1945)

Source: <http://www.weather.com/outlook/travel/businesstraveler/wxclimatology/monthly/85935>

Weather

Lakeside

Month	Avg. High	Avg. Low	Mean	Avg. Precip	Record High	Record Low
January	47°F	23°F	35°F	1.32 in.	69°F (2000)	-25°F (1971)
February	52°F	26°F	39°F	1.37 in.	71°F (1989)	-3°F (1990)
March	58°F	31°F	45°F	1.45 in.	80°F (2004)	-7°F (1966)
April	66°F	37°F	51°F	0.68 in.	84°F (2000)	4°F (1975)
May	74°F	45°F	60°F	0.72 in.	100°F (1969)	14°F (1967)
June	85°F	53°F	69°F	0.46 in.	98°F (1973)	30°F (1974)
July	87°F	59°F	73°F	2.18 in.	100°F (2003)	38°F (1974)
August	84°F	58°F	71°F	3.30 in.	95°F (1995)	37°F (1968)
September	79°F	51°F	65°F	1.78 in.	93°F (1979)	25°F (1968)
October	69°F	40°F	54°F	1.76 in.	86°F (1979)	12°F (1975)
November	56°F	30°F	43°F	1.52 in.	77°F (1980)	-14°F (1976)
December	48°F	23°F	35°F	1.59 in.	68°F (2003)	-22°F (1990)

Source: <http://www.weather.com/outlook/travel/businesstraveler/wxclimatology/monthly/85929>

Heber- Overgaard

Month	Avg. High	Avg. Low	Mean	Avg. Precip	Record High	Record Low
January	47°F	18°F	33°F	1.50 in.	72°F (1969)	-25°F (1963)
February	51°F	21°F	36°F	1.55 in.	78°F (1954)	-18°F (1962)
March	56°F	25°F	40°F	1.70 in.	78°F (1954)	-12°F (1966)
April	63°F	29°F	46°F	0.60 in.	85°F (2000)	2°F (1972)
May	72°F	36°F	54°F	0.74 in.	91°F (2002)	13°F (1967)
June	82°F	44°F	63°F	0.48 in.	100°F (1970)	21°F (1955)
July	84°F	53°F	68°F	2.70 in.	100°F (1989)	30°F (1968)
August	81°F	52°F	66°F	3.23 in.	98°F (1969)	30°F (1968)
September	76°F	45°F	61°F	2.01 in.	94°F (1996)	21°F (1965)
October	67°F	34°F	50°F	1.64 in.	87°F (1996)	6°F (1965)
November	55°F	24°F	39°F	1.48 in.	78°F (1980)	-11°F (1976)
December	47°F	18°F	33°F	1.54 in.	70°F (1958)	-22°F (1968)

Source: <http://www.weather.com/outlook/travel/businesstraveler/wxclimatology/monthly/85928>

Weather

Hon-Dah McNary

Month	Avg. High	Avg. Low	Mean	Avg. Precip	Record High	Record Low
January	41°F	16°F	29°F	1.49 in.	65°F (1971)	-24°F (1971)
February	44°F	18°F	31°F	1.37 in.	65°F (1981)	-13°F (1985)
March	49°F	22°F	35°F	1.58 in.	75°F (2004)	-15°F (1966)
April	56°F	27°F	42°F	0.90 in.	75°F (2000)	-4°F (1975)
May	65°F	34°F	49°F	0.91 in.	84°F (2002)	8°F (1967)
June	75°F	42°F	58°F	0.94 in.	89°F (1974)	24°F (1967)
July	75°F	47°F	62°F	3.77 in.	90°F (1971)	34°F (1964)
August	72°F	47°F	60°F	4.46 in.	87°F (1997)	33°F (1968)
September	68°F	41°F	55°F	2.48 in.	80°F (1979)	20°F (1965)
October	60°F	32°F	46°F	2.14 in.	77°F (1979)	8°F (1972)
November	49°F	23°F	36°F	1.62 in.	74°F (1980)	-12°F (1976)
December	43°F	17°F	30°F	1.53 in.	63°F (1980)	-20°F (1978)

Source: <http://www.weather.com/outlook/travel/businesstraveler/wxclimatology/monthly/85930>

Cibecue

Month	Avg. High	Avg. Low	Mean	Avg. Precip	Record High	Record Low
January	55°F	21°F	38°F	2.32 in.	78°F (1976)	-21°F (1979)
February	58°F	24°F	41°F	2.10 in.	84°F (1979)	-8°F (1985)
March	62°F	27°F	45°F	2.66 in.	84°F (1994)	-10°F (1966)
April	69°F	31°F	50°F	0.85 in.	88°F (1996)	11°F (1970)
May	78°F	37°F	57°F	0.69 in.	98°F (1984)	17°F (1975)
June	88°F	45°F	66°F	0.42 in.	103°F (1994)	25°F (1980)
July	90°F	55°F	72°F	2.54 in.	105°F (2003)	35°F (1973)
August	88°F	55°F	71°F	3.29 in.	100°F (2002)	36°F (1980)
September	84°F	47°F	66°F	2.02 in.	97°F (1979)	25°F (1980)
October	75°F	36°F	55°F	2.11 in.	94°F (1980)	10°F (1980)
November	63°F	26°F	44°F	1.67 in.	81°F (1975)	-6°F (1975)
December	56°F	21°F	39°F	1.88 in.	76°F (1995)	-22°F (1990)

Source: <http://www.weather.com/outlook/travel/businesstraveler/wxclimatology/monthly/85911>

Weather

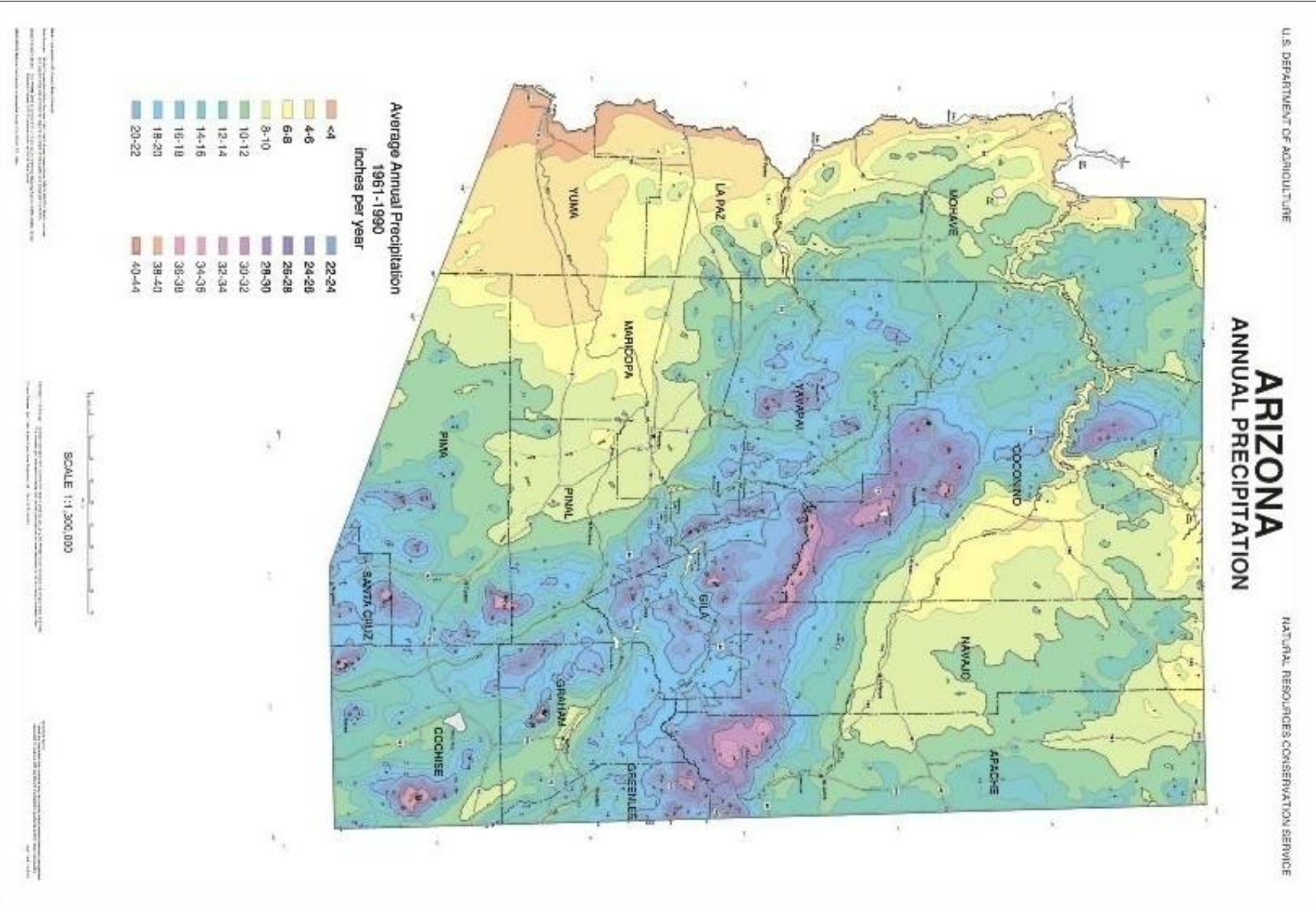
Whiteriver

Month	Avg. High	Avg. Low	Mean	Avg. Precip	Record High	Record Low
January	55°F	25°F	40°F	1.80 in.	75°F (1950)	-13°F (1949)
February	58°F	27°F	43°F	1.59 in.	78°F (1986)	-6°F (1948)
March	62°F	31°F	47°F	2.16 in.	86°F (1900)	3°F (2002)
April	70°F	33°F	51°F	0.82 in.	98°F (1914)	14°F (1921)
May	78°F	39°F	59°F	0.62 in.	100°F (2002)	18°F (1917)
June	88°F	48°F	68°F	0.58 in.	104°F (1902)	30°F (1918)
July	90°F	55°F	72°F	2.44 in.	106°F (2003)	39°F (2004)
August	87°F	55°F	71°F	3.62 in.	102°F (1911)	34°F (1917)
September	84°F	49°F	67°F	1.75 in.	100°F (1950)	25°F (1915)
October	74°F	39°F	57°F	1.83 in.	93°F (1950)	17°F (1970)
November	63°F	29°F	46°F	1.48 in.	91°F (1909)	-7°F (1931)
December	56°F	24°F	40°F	1.45 in.	79°F (1942)	-12°F (1905)

Source: <http://www.weather.com/outlook/travel/businesstraveler/wxclimatology/monthly/85941>

Arizona Annual Precipitation

Source: NOAA <http://www.wrh.noaa.gov/images/twc/climate/az.jpg>



Cultural Amenities

Winslow

Events

Winslow Railroad Days	April
Family Fun Day/Freedom Festival (parade, youth activities, BBQ competition, carnival, fireworks)	4th of July
Suvoyaki Day at Homolovi State Park	July
Catholic Community of Winslow Fiesta	August
Standin' On The Corner Festival, Winslow Fire Truck Pull,	September
Standin' On The Corner Just Cruisin' Car Show, Community Block Party	October
Christmas Parade	November
Festival of Trees	Nov-Dec

Museums

Old Trails Museum 212 N Kinsley Ave
 Hubbell Trading Post (undergoing renovation)

Holbrook

Events

Annual Hashknife Pony Express Ride	January
Community Awards Banquet	February
Community Easter Egg Hunt	March
Health Fair and First Step Salad Luncheon	April
Native American Dances	June & July
Old West Car Show	June & July
Hashknife Stampede Softball Tournament	June & July
"Bark in the Park"	June & July

Museums

Historic Courthouse and Rt. 66 Museum
 100 E Arizona Street
 Holbrook, AZ 86025

Chamber Of Commerce

101 E 2nd St

Art Galleries

Snow Drift Art Space 2nd St
 La Posada Hotel 303 E 2nd St

Antique Shops

Welcome Home 120 E 2nd St

July 4th: Annual Firemen's BBQ and Fireworks	July 4th
Annual Old West Days & Bucket of Blood Races	August
Southwest Quilt Festival & Train Show	August
Annual Old West Soft Ball Tournament and Chili Cook-Off	August
Navajo County Fair	September
Oktoberfest and Spooktacular	October
Holiday Showcase	November
Parade of Lights and Festival of Trees	December

Cultural Amenities

Snowflake

Events

4th of July Festival w/Fireworks, Arts & Crafts Show and Carnival
Oktoberfest Arts & Crafts Festival
Trunk or Treat

July
September
October

Winterfest
Children's Christmas gift Party

November
December

Taylor

Events

Taylor Trapper Days at Taylor Rodeo Park
July 4th Rodeo at Taylor Rodeo Park
Taylor Sweet Corn Festival and state BBQ Championship
at Taylor Rodeo Park: parade, BBQ, vendors

May
July

August

12 Days of Christmas & Annual Christmas Lighting
Patriotic Programs and Various Events

December

Museums

Taylor Museum, 2 North Main Street

Show Low

Events

Annual show Low Memorial Day Softball Tournament
Show Low Days, Still Cruzin' Car Show
EAA Annual Fly-in Pancake Breakfast
July 4th Celebration
Annual Tri in the Pines Triathlon
Show Low Mountain Festival
Show Low Main Street Trunk or Treat

May
June
June
July
August
September
October

Show Low Main Street Christmas
Tree Lighting and Electric Light Parade

December

Museums

Show Low Historical Society Museum

Pinetop/Lakeside

Events

2008 Winter Games at Sunrise Park Resort/Dog Sled Races
President's Day Ceremonies
Annual Easter Egg Hunt & Family Easter Walk
National Arbor Day Celebration
White Mountain Sheriff's Posse Annual Mail Ride
to Camp Verde via General Crook's Trail
Lupe Acevedo's 24th Annual Blue Ridge
Scholarship Fund Golf Tournament
Cinco de Mayo Celebration Hon-Dah Resort Casino
Seventh Annual White Mountain Bike Rodeo and Safety Fair
VFW Post 2364 and Ladies Auxiliary Armed Forces Day Program
at the Pinetop-Lakeside Veterans Memorial

January
February
March
April

April

May
May
May

May

Memorial Day Services
Annual Comedy Show at Hon-Dah Resort,
Casino and Conference Center
9th Annual Art Barn Memorial Day Arts & Crafts Show
Annual National Trails Day Celebration
Annual Pow Wow in the Pines
Annual Father's Day Fishing Contest
Charlie Clark's 27th Annual Pig Roast
Annual Northeast Arizona Fine Arts Association
Art Show & Craft Sale
Annual Art Barn 4th of July Arts and Crafts Festival
Independence Day Program

May

May
June
June
June
June
June
July
July
July

Cultural Amenities

Pinetop/Lakeside(continued)

White Mountain Native American Art Festival	July	Annual Tour of the White Mountains Endurance	
Annual White Mountains Roundup of Cowboy Poetry, Music & Art	July	33rd Annual Fall Artisans Festival	September
Annual Christmas Cabin Craft Show	July	3rd Annual Woodland Wild Country Expo	October
Annual White Mountain Apache Tribal Fair and Rodeo	August	Mountain Bike Event	October
White Mountain Sheriff's Posse Annual Barbeque	August	Oktoberfest at Hon-Dah Resort	October
Annual White Mountain Bluegrass Music Festival	August	Annual Woodland Wildlife Festival	October
Annual Art Barn Labor Day Arts & Crafts Festival	August	Veterans' Day Activities	November
Fall Festival Parade	September	Woodland Park Holiday Festival and Christmas Tree Lighting	December
Annual Pinetop-Lakeside Fall Festival Arts and crafts, talent show, antique show and sale, quilts show	September	Pearl Harbor Day Ceremonies	December
Annual Run to the Pines Car Show	September	New Years Eve Party, Hon-Dah Resort & Casino	December

Antique Shops

Country Pine Antiques
 Diamond Creek Jewelry & Collectibles
 Harvest Moon Antiques
 Honey Bear Antiques
 Little Log Cabin
 Little Shoppe at the Inn
 Mountain Haven Inn
 Orchard Antiques
 Outhouse Antiques
 The Antique Mercantile Co.
 The Roost
 White Mountain Cottage
 Wings of Light
 Woodland Antiques & Stuff

Heber-Overgaard

Events

Art and Craft Fair August

Whiteriver

Events

Annual White Mountain Apache Tribal Fair & Rodeo August

Art Galleries

Amazing Grace Watercolors
 Integrity Arts International Art Gallery
 Diamond West Art Gallery
 Joyous Lake Gallery
 High Country Art Gallery
 Pinetop Contemporary Fine Art Gallery

Museums

Pinetop-Lakeside Museum

Museums

Stinson Pioneer Museum

Medical Services / Providers

	Winslow	Holbrook	Snowflake	Taylor	Show Low	Pinetop-Lakeside	Heber-Overgaard	Whiteriver	Springerville
Hospital	2				1				1
Pharmacy	2	2		1	4	2	1		
Social Worker - Clinical		2							
Osteopath	2	4	1	1	8	3			
Medical Doctor	12	16	13	1	17	12			
Internal Medicine		1			5	1			
Behavioral Health Provider		4			2				
Family Practice	1				12	8			
General/Acute Care Hospital	1				1				
Licensed Professional Counselor	1				3				
OB-Gynecology	1				2				
Pediatrics	1				3	2		1	
Psychiatric Hospital					1				
Holistic					2	1			
Licensed Marriage/Family Therapist					3	1			
Marriage & Family Counselor					3	1			
Ear, Nose, Throat						1			
Urologist						1			
Ophthalmologist						1			
Orthopedics					3				
Cardiology					3				
Psychiatrist					4				
Neurologist					1				

Dentists

	Winslow	Holbrook	Snowflake-Taylor	Show Low	Pinetop-Lakeside	Heber-Overgaard
Dentist	5	3	5	11	12	
Dental Clinic			1	3	3	1
Dental Laboratory				1	1	
Periodontal				1	0	

Crime

Occurrences of Crimes (2005)

Crime	Winslow	Holbrook	Snowflake-Taylor	Show Low	Pinetop-Lakeside	Unincorporated Navajo County
Murder/Manslaughter	0	0	0	0	0	1
Rape	3	9	0	6	0	3
Robbery	4	6	1	5	0	3
Aggravated Assault	128	100	46	107	5	34
Total Violent Crime	135	115	47	118	5	41
Burglary	160	81	65	146	52	341
Larceny/Theft	539	374	176	367	76	159
Vehicle Theft	51	13	15	40	8	41
Total Property Crime	750	468	256	553	136	541
Total Crimes:	885	583	303	671	141	582

Source: <http://www.disastercenter.com/arizona/crime>

Crime Index per 100,000 People

Crime	Winslow	Holbrook	Snowflake-Taylor	Show Low	Pinetop-Lakeside	Unincorporated Navajo County
Population	10238	5275	8782	9775	4170	71,838
Murder/ Manslaughter	0.0	0.0	0.0	0.0	0.0	1.4
Rape	29.3	170.6	0.0	61.4	0.0	4.2
Robbery	39.1	113.7	11.4	51.2	0.0	4.2
Aggravated Assault	1250.2	1895.7	523.8	1094.6	119.9	47.3
Total Violent Crime	1318.6	2180.1	535.2	1207.2	119.9	57.1
Burglary	1562.8	1535.5	740.2	1493.6	1247.0	474.7
Larceny Theft	5264.7	7090.0	2004.1	3754.5	1822.5	221.3
Vehicle Theft	498.1	246.4	170.8	409.2	191.8	57.1
Total Property Crime	7325.6	8872.0	2915.1	5657.3	3261.4	753.1
Total Crime	8644.2	11052.1	3450.3	6864.5	3381.3	810.2

Source: <http://www.disastercenter.com/arizona/crime>

Natural Resources

	Winslow*	Holbrook**	Snowflake**	Taylor**	Show Low	Pinetop-Lakeside **	Heber-Overgaard	Hon-Dah McNary	Cibecue	Whiteriver
Alternative Power (wind by class)	Zone 2	Zone 4	Zone 4	Zone 4						
Raw Materials for Biomass	X		X	X	X	X				
Saw Timber / roundwood	X		X	X	X	X				
bio-fuel	X		X	X	X	X				
Water	X	X	X	X	X	X				
Solar	X	X	X	X	X	X				
Carbon Dioxide	X									
Helium	X	X								
Lime Deposits	X									
Coal Deposits	X									
Salt Caverns	X	X								
Sandstone	X	X	X	X						
Aggregate Road Material	X	X	X	X						

* Source: SEDI Asset Inventory – 2008
 Source: Plateau Region Inventory Assessment – 2005

Hotel & Motels

Totals	Winslow	Holbrook	Snowflake	Taylor	Show Low	Pinetop-Lakeside	Heber-Overgaard	Hon-Dah McNary	Cibecue	Whiteriver
Hotel/Motel/Resort	16	22	2	1	12	31	1	2		1
Cabin/Lodge/Ranch						9	8	1		
Bed & Breakfast		1	1		2	9	1			
Total:	16	23	3	1	14	49	10	3		1

Winslow

Name of Hotel/Motel	Address	Phone	No. of Rooms	C/M Rooms	C/M Seating Capacity
Bel Air Motel	1003 E 2nd St. Winslow, AZ 86047	(928) 289-2943	25		
Comfort Inn	1701 N Park Dr. Winslow, AZ 86047	(928) 289-4638	72	1	<50
Days Inn	2035 W Hwy 66 Winslow, AZ 86047	(928) 289-1010	64		
Desert Sun Motel	1000 E 3 rd St. Winslow, AZ 86047	(928) 289-1007	33		
Delta Motel	2141 W 3 rd St. Winslow, AZ 86047	(928) 289-3897	33		
Economy Inn	912 W 2 nd St. Winslow, AZ 86047	(928) 289-3328	23		
Econo Lodge	1706 N Park Dr. Winslow, AZ 86047	(928) 289-4687	72		
Holiday Inn Express	816 Transcon Ln Winslow, AZ 86047	(928) 289-2960	52		
La Posada Hotel	303 E 2nd St. Winslow, AZ 86047	(928) 289-4366	37	1	50
Motel 6	520 W Desmond Winslow, AZ 86047	(928) 289-9581	55		
Motel 10	725 W 3rd St. Winslow, AZ 86047	(928) 289-3211	32		
Rest Inn	1901 W 2nd St. Winslow, AZ 86047	(928) 289-2458	24		

Source: <http://www.winslowarizona.org>

Hotel & Motels**Winslow (continued)**

Name of Hotel/Motel	Address	Phone	No. of Rooms	C/M Rooms	C/M Seating Capacity
Super 8 Motel	1916 W 3rd St. Winslow, AZ 86047	(928) 289-4606	47		
The Lodge	1914 W 3rd St. Winslow, AZ 86047	(928) 289-4611	68	1	200
Westerner Motel	500 E 2nd St. Winslow, AZ 86047	(928) 289-2825	12		
Winslow Inn	701 W 3rd St. Winslow, AZ 86047	(928) 289-9389	64		

Source: <http://www.winslowarizona.org>**Holbrook**

Name of Hotel/Motel	Address	Phone	No. of Rooms	C/M Rooms	C/M Seating Capacity
America's Best Inn	2211 E Navajo Blvd. Holbrook, AZ 86025	(928) 524-2654	40		
America's Best Value Inn	720 Navajo Blvd Holbrook, AZ 86025	(928) 524-6216	60		
Best Western Adobe Inn	615 W Hopi Dr Holbrook, AZ 86025	(928) 524-3948	54		
Best Western Arizonian Inn	2508 Navajo Blvd Holbrook, AZ 86025	(928) 524-2611	70	1	
Budget Inn Motel	602 Navajo Blvd. Holbrook, AZ 86025	(928) 524-6263	26		
Comfort Inn	2602 E Navajo Blvd Holbrook, AZ 86025	(928) 524-6131	61		
Brad's Desert Inn	301 W Hopi Dr Holbrook, AZ 86025	(928) 524-6929	18		
Days Inn	2601 Navajo Blvd Holbrook, AZ 86025	(928) 524-6949	54		
Econo Lodge	2596 Navajo Blvd Holbrook, AZ 86025	(928) 524-1448	63		

Hotel & Motels**Holbrook (continued)**

Name of Hotel/Motel	Address	Phone	No. of Rooms	C/M Rooms	C/M Seating Capacity
El Rancho Motel	867 Navajo Blvd. Holbrook, AZ 86025	(928) 524-3332	13		
Heward House Bed & Breakfast	108 Crestview Dr. Holbrook, AZ 86025	(928) 524-3411	4		
Holbrook Inn (Budget Host)	235 W Hopi Dr. Holbrook, AZ 86025	(928) 524-3809	26		
Holiday Inn Express	1308 E Navajo Blvd Holbrook, AZ 86025	(928) 524-1466	59	1	35
Motel 6	2514 Navajo Blvd Holbrook, AZ 86025	(928) 524-6101	126		
Ramada Limited	2608 E Navajo Blvd Holbrook, AZ 86025	(928) 524-2566	60		
Roseway Inn	310 W Hopi Dr. Holbrook, AZ 86025	(928) 524-1057	22		
Sahara Inn	2402 Navajo Blvd Holbrook, AZ 86025	(928) 524-6298	24		
66 Motel	2105 Navajo Blvd Holbrook, AZ 86025	(928) 524-6234	35		
Star Inn	1009 W Hopi Dr. Holbrook, AZ 86025	(928) 524-6147	31		
Super 8 Motel	1989 Navajo Blvd Holbrook, AZ 86025	(928) 524-2871	75		
Travelodge	2418 N Navajo Blvd Holbrook, AZ 86025	(928) 524-6815	33		
Western Holiday Motel	720 Navajo Blvd Holbrook, AZ 86025	(928) 524-6220	60		
Wigwam Motel & Curios	811 W Hopi Dr. Holbrook, AZ 86025	(928) 524-3048	15		

Source: <http://www.ci.holbrook.az.us>Source: <http://www.hotelandtravelindex.travelweekly.com>Source: <http://azwhitemountains.net/lodging.cfm?ID=135>

Hotel & Motels**Snowflake**

Name of Hotel/Motel	Address	Phone	No. of Rooms	C/M Rooms	C/M Seating Capacity
Cedar Motel	39 S Main St. Snowflake, AZ 85937	(928) 536-3294	16		
Comfort Inn Snowflake	2055 S Main St. Snowflake, AZ 85937	(928) 536-3888	64	2	80
Osmer D. Heritage Inn (B&B)	161 N Main St. Snowflake, AZ 85937	(928) 536-3322	11		

Source: <http://www.hotelandtravelindex.travelweekly.com>Source: <http://www.frontierpages.com>Source: <http://www.snowflaketaylorchamber.org/>**Taylor**

Name of Hotel/Motel	Address	Phone	No. of Rooms	C/M Rooms	C/M Seating Capacity
Roadway Inn Silver Creek Inn	825 North Main St. Taylor, AZ 85939	(928) 536-2600	42		

Source: <http://www.frontierpages.com>Source: <http://www.snowflaketaylorchamber.org/>**Show Low**

Name of Hotel/Motel	Address	Phone	No. of Rooms	C/M Rooms	C/M Seating Capacity
America's Best Value Inn	1941 E Deuce of Clubs Show Low, AZ 85901	(928) 537-7694	42		
Best Western Paint Pony Lodge	581 W Deuce of Clubs Show Low, AZ 85901	(928) 537-5773	50		
Budget Inn & Suites	1290 E Deuce of Clubs Show Low, AZ 85901	(928) 532-1688	34		
Cool Mountain Vacations	4980 W. Stagecoach Trail Show Low, AZ 85901	(928) 532-1112	34		
Days Inn	480 W Deuce of Clubs Show Low, AZ 85901	(928) 537-4356	122	1	150

Hotel & Motels

Show Low (continued)

Name of Hotel/Motel	Address	Phone	No. of Rooms	C/M Rooms	C/M Seating Capacity
Downtown 9 Motel	1457 E Deuce of Clubs Show Low, AZ 85901	(928) 537-4334	50		
Hampton Inn	1501 S. Woolford Rd. Show Low, AZ 85901	(928) 532-4444	86	2	120
Holiday Inn Express	151 Deuce of Clubs Show Low, AZ 85901	(928) 537-5115	71	1	35
KC Motel	60 W Deuce of Clubs Show Low, AZ 85901	(928) 537-4433	35		
Kiva Motel	261 E Deuce of Clubs Show Low, AZ 85901	(928) 537-4542	20		
Sleep Inn Show Low	1751 W Deuce of Clubs Show Low, AZ 85901	(928) 532-7323	70		50
Snowy River Motel	1640 E Deuce of Clubs Show Low, AZ 85901	(928) 537-2926	18		
Stewart Investment and Management			32		
Thunderbird Motel	1131 E Deuce of Clubs Show Low, AZ 85901	(928) 537-4391	11		
Stewart Investment & Management (Property Management Company)	2707 White Mountain Rd. Suite D Show Low, AZ 85901	(928) 537-1888			

Source: <http://arizonaguide.com>Source: <http://www.frontierpages.com>Source: <http://www.hotelandtravelindex.travelweekly.com>Source: <http://www.wmonline.com>Source: <http://azwhitemountains.net/lodging.cfm?ID=135>

Pinetop-Lakeside

Name of Hotel/Motel	Address	Phone	No. of Rooms	C/M Rooms	C/M Seating Capacity
Bear Mountain Inn & Suites	1637 W White Mountain Blvd Pinetop, AZ 85929	928368-6600	55	1	

Best Western Inn of Pinetop	404 E White Mountain Blvd/ PO Box 1006 Pinetop, AZ 85935	(928) 367-6667	42
------------------------------------	--	----------------	----

Hotel & Motels

Pinetop-Lakeside (continued)

Name of Hotel/Motel	Address	Phone	No. of Rooms	C/M Rooms	C/M Seating Capacity
Blue Ridge Motel	2012 E White Mountain Blvd Pinetop, AZ 85935	(928) 367-0758	10 + 4 cabins		
Bonanza Motel	858 E White Mountain Blvd Pinetop, AZ 85935	(928) 367-4440	13		
Buck Springs Resort	6126 Buck Springs Rd Pinetop, AZ 85935	(928) 369-3554	24		
Cubbyhole Rentals	605 W Monarch Pinetop, AZ 85935	(480) 620-2669 (480) 209-7363	1 cabin		
Double B Lodge	1075 E White Mountain Blvd Pinetop, AZ 85935	(928) 367-2742	15		
Hilltop Motel	577 E White Mountain Blvd Pinetop, AZ 85935	(928) 367-4451	12		
Holiday Inn Express	431 E White Mountain Blvd Pinetop, AZ 85935	(928) 367-6077	73	1	
Kobey's Cozy Cabin	Pinetop, AZ	(602) 686-6923	3		
Moonridge Lodge	596 W White Mountain Blvd Pinetop, AZ 85935	(928) 367-1906	20		
Mountain Hacienda Lodge	1023 E White Mountain Blvd Pinetop, AZ 85935	(928) 367-4146	24		
Mountain Haven Inn	1120 E White Mountain Blvd Pinetop, AZ 85935	(928) 367-2101	10		
Nine Pines Motel	2089 E White Mountain Blvd Pinetop, AZ 85935	(928) 367-2999	23		
Northwoods Resort	165 E White Mountain Blvd Pinetop, AZ 85935	(928) 367-2966	14		
Pinetop Lodge	593 E White Mountain Blvd Pinetop, AZ 85935	(928) 367-3510	15		

Quality Hills Resort Villas	3753 Crown Dancer Dr Pinetop, AZ 85935	(928) 369-0178			
------------------------------------	---	----------------	--	--	--

Hotel & Motels

Pinetop-Lakeside (continued)

Name of Hotel/Motel	Address	Phone	No. of Rooms	C/M Rooms	C/M Seating Capacity
Roundhouse Resort	5829 Buck Springs Rd Pinetop, AZ 85935	(928) 369-4848	59 units		
Super 8 Motel-Pinetop	1202 E White Mountain Blvd Pinetop, AZ 85935	(928) 367-3161	45		
Timber Lodge Motel	1078 E White Mountain Blvd Pinetop, AZ 85935	(928) 367-4463	30		
Trendwest at Pinetop	3300 E White Mountain Blvd Pinetop, AZ 85935	(928) 369-3351			
Tribbey's Vacation Rental (Property Management Company)	10443 N Nicklaus Dr. Fountain Hills, AZ 85286	(480) 747-3123	2 Homes		
Whispering Pines Resort	237 E White Mountain Blvd Pinetop, AZ 85935	(928) 367-4386	31		
Woodland Inn & Suites	458 E White Mountain Blvd Pinetop, AZ 85935	(928) 367-3636	42		
Bear Mountain Inn & Suites	1637 W White Mountain Blvd Lakeside, AZ 85929	(928) 368-6600	55		
Bear's Paw Motel	4229 Vallery Lane Lakeside, AZ 85929	(928) 368-5231	22		
The Byrd House Inn (B&B)	2911 W White Mountain Blvd Lakeside, AZ 85929	(928) 368-9585	2		
Forest House Motel	2990 W White Mountain Blvd Lakeside, AZ 85929	(928) 368-6628	17		
Hidden Rest Resort	3448 Hwy 260 Lakeside, AZ 85929	(928) 368-6336	11		
Honey Bear Lodge	2251 W White Mountain Blvd. Lakeside, AZ 85929	(928) 368-4414	4		
Lake of the Woods Resort	2244 W White Mountain Blvd Lakeside, AZ 85929	(928) 368-5353	23		

Lazy Oaks Resort	1075 Larson Road Lakeside, AZ 85929	(928) 368-6203	15		
-------------------------	--	----------------	----	--	--

Hotel & Motels**Pinetop-Lakeside (continued)**

Name of Hotel/Motel	Address	Phone	No. of Rooms	C/M Rooms	C/M Seating Capacity
Oakwood Inn Bed & Breakfast	6558 Wagon Wheel Lane Lakeside, AZ 85929	(928) 567-3030	4		
The Place Resort	3179 W White Mountain Blvd Lakeside, AZ 85929	(928) 368-6777	20		
Rainbow Lake Lodge Resort	1638 W White Mountain Blvd. Lakeside, AZ 85929	(928) 368-6364	14 Cabins		
Rainbow's End Resort	2677 Trout Road Lakeside, AZ 85929	(928) 368-9004	10 cabins		
Spring Hill on Rainbow Lake (Property Management Company)	PO Box 1040 Lakeside, AZ 85929	(928) 368-8688			

Source: <http://www.hotelandtravelindex.travelweekly.com>
 Source: <http://www.wmonline.com>
 Source: <http://www.frontierpages.com>
 Source: <http://azwhitemountains.net/lodging.cfm?ID=135>

Source: <http://www.pinetop-lakeside.com>
 Source: <http://www.pinetop-lakeside.worldweb.com/>
 Source: <http://arizonaguide.com>

Heber-Overgaard

Name of Hotel/Motel	Address	Phone	No. of Rooms	C/M Rooms	C/M Seating Capacity
Best Western Sawmill Inn	1877 Hwy 260/PO Box 730 Heber, AZ 85928	(928) 535-5053	43		
Buckskin Lodge	1842 Hwy 260 Heber, AZ 85928	(928) 535-4598	13		
Big Pine Resort	2268 Hwy 260 Overgaard, AZ 85933	(928) 535-5649	3 cabins		
Bison Ranch Resort Suites	2341 Quarter Horse Trail PO Box 2365 Overgaard, AZ 85933	(928) 535-6990	86	6	20-50 Pavilion-300
Cabin Inns of Overgaard	PO Box 2140 Overgaard, AZ 85933	(928) 535-6311	37		
Deer Springs Inn	PO Box 866 Clay Springs, AZ 85923	(928) 528- 7350/(928) 368- 5229	3 cabins		

Hotel & Motels**Heber-Overgaard (continued)**

Name of Hotel/Motel	Address	Phone	No. of Rooms	C/M Rooms	C/M Seating Capacity
Eden Landing Luxury Lodge	2864 Chandelle Lane Overgaard, AZ 85933	(623) 826-3144	1 house		
Mogollon Resort Cabins	2742 Fox Trail Overgaard, AZ 85933	(928) 535-3250	34 cabins		
Overgaard Springs Ranch	2246 Hwy 260 Overgaard, AZ 85933	(928) 535-9737	71 homes/condos (proposed)		

Source: <http://www.heberovergaard.org>
 Source: <http://www.arizonaguide.com>

Source: <http://www.frontierpages.com>
 Source: <http://www.bisonranchsuites.com>

Hon-Dah McNary

Name of Hotel/Motel	Address	Phone	No. of Rooms	C/M Rooms	C/M Seating Capacity
Hawley Lake Cabins	PO Box 550 Hon-Dah McNary, AZ 85930	(928) 369-1753	Lodge(11 rooms) + 68 cabins		
Hon-Dah Resort	777 Hwy 260 Pinetop, AZ 85935	(928) 369-0299 (800) 929-8744	128	6	700
Sunrise Park Lodge	Hwy 273/PO Box 117 Hon-Dah McNary, AZ 85930	(928) 735-7669	100		200

Source: <http://www.frontierpages.com>
 Source: <http://www.sunriseskipark.com/>

Whiteriver

Name of Hotel/Motel	Address	Phone	No. of Rooms	C/M Rooms	C/M Seating Capacity
White Mountain Apache Motel	1109 S Chief Ave Whiteriver, AZ 85941	(928) 338-4927	12		

Source: <http://www.frontierpages.com>

RV Park & Campground Facilities

Winslow

Name	Address	Phone	Number of Spaces
Homolovi Ruins State Park	Hwy 87 North Winslow, AZ	(928) 289-4106	53
McHood County Park	8419 Hwy 99 South Winslow, AZ 86047	(928) 699-8808	24

Source: <http://www.winslowarizona.org>

Holbrook

Name	Address	Phone	Number of Spaces
KOA Kampground	102 Hermosa Dr. Holbrook, AZ 86025	(928) 524-6689	110
OK RV Park	1576 Roadrunner Rd. Holbrook, AZ 86025	(928) 524-3226	140

Source: <http://www.ci.holbrook.az.us>

Snowflake

Name	Address	Phone	Number of Spaces
Putters Paradise RV Park	2085 W Snowflake Blvd. Snowflake, AZ 85937	(928) 536-2127	89

Source: <http://www.snowflaketaylorchamber.org>

Show Low

Name	Address	Phone	Number of Spaces
Camp Town	1221 W McNeil Show Low, AZ 85901	(928) 537-2578	
Fool Hollow Lake Recreation Area		(928) 537-3680	129
K-Bar RV Resort	300 N 16th Ave. Show Low, AZ 85901	(928) 537-2886	92

Pine Shadows Mobile Home & Travel Trailer Park	4951 S White Mountain Rd. Show Low, AZ 85901	(928) 537-2895	5
---	---	----------------	---

RV Park & Campground Facilities**Show Low (continued)**

Name	Address	Phone	Number of Spaces
Ranchero Mobile Home & RV Park	3860 S. White Mountain Rd. Show Low, AZ 85901	(928) 537-4479	
Show Low Lake Campground			75
Show Low Lake County Park	5800 Show Low Lake Rd. Show Low, AZ 85901	(928) 537-4126	70
Venture In RV Resort	270 N Clark Rd. Show Low, AZ 85901	(928) 537-4443	375
Voyager at Juniper Ridge	1993 Juniper Ridge Dr. Show Low, AZ 85901	(928) 532-3456	500
Waltner's Mountain Crest RV Resort	4800 S 28th St. Show Low, AZ 85901	(928) 537-4611	145

Source: <http://www.wmonline.com>Source: <http://www.showlowchamberofcommerce.com/>**Pinetop-Lakeside**

Name	Address	Phone	Number of Spaces
Blue Ridge Motel & RV Park	2012 E White Mountain Blvd. Pinetop, AZ 85935	(928) 367-0758	
Rim Country RV Park	PO Box 2424 3629 White Mountain Blvd. Pinetop, AZ 85935	(928) 368-4927/2450	40
Rim Crest RV Park	6886 Forest Ave. Lakeside, AZ 85929	(928) 537-4660	100 permanent and full
Elk Horn RV Park	4307 W White Mountain Blvd. Lakeside, AZ 85929	(928) 368-5343	35
Homestead Road Mobile Ranch	2333 C Homestead Rd. Lakeside, AZ 85929	(928) 368-6878	97 (long-term)
Ponderosa RV Resort	1666 Ponderosa Park Lakeside, AZ 85929	(928) 368-6989	150

RV Park & Campground Facilities**Pinetop-Lakeside (continued)**

Name	Address	Phone	Number of Spaces
Rainbow Forest RV Park	3720 Rainbow Lake Dr. Lakeside, AZ 85929	(928) 368-5286	
Rim Crest RV Park	6886 Forest Ave. Lakeside, AZ 85929	(928) 368-6203	15
Silver Sage RV Park	1609 W White Mountain Rd. Lakeside, AZ 85929	(928) 368-6370	28
Singing Pines RV & MH Park	1930 Larson Rd. Lakeside, AZ 85929	(928) 368-4734	51
Sleepy Hollow RV Park	3734 W White Mountain Blvd. Lakeside, AZ 85929	(928) 368-9029	

Source: <http://www.wmonline.com>Source: <http://www.getrv.com>Source: <http://www.eco-usa.com>**Heber-Overgaard**

Name	Address	Phone	Number of Spaces
Arizona High Country Campground	PO Box 808/5064 Sawmill Rd. Clay Springs, AZ 85923	(928) 739-4383	
SunriseWhite Mountain Park	1876 E Hwy 260 MP 317 Show Low, AZ 85901	(928) 535-5978	60
Elk Pines RV Resort	2256 E Hwy 260 Overgaard, AZ 85933	(928) 535-4430	
Lazy L Resort RV Park	PO Box 967/2731 Mogollon Dr. Overgaard, AZ 85933	(928) 587-0613	73
Mabb's Ranch	3900 Forest Road 139A Clay Springs, AZ 85903	602-448-4016	36
Overgaard RV Resort	2750 Yates Rd. Overgaard, AZ 85933	(928) 535-4430	46

Source: <http://www.wmonline.com>Source: <http://www.heberovergaard.org/>

RV Park & Campground Facilities

Hon-Dah McNary

Name	Address	Phone	Number of Spaces
A-1 Lake	100 W Fatco Rd./PO Box 220 Whiteriver, AZ 85941	(928) 338-4385	15
Hawley Lake	100 W Fatco Rd./PO Box 220 Whiteriver, AZ 85941	(928) 335-7511 (928) 369-7669	125
Hon-Dah RV Park	777 Hwy 260 Pinetop, AZ 85935	(928) 369-7400	258
Sunrise RV Park	100 W Fatco Rd./PO Box 220 Whiteriver, AZ 85941	(877) 258-2598 (928) 735-7669	20
Sunrise Campground	100 W Fatco Rd./PO Box 220 Whiteriver, AZ 85941	(877) 258-2598 (928) 735-7669	200

Source: <http://www.hon-dah.com>

Source: <http://wmatoutdoors.org>

Source: <http://www.arizonahandbook.com>

Restaurants

Total Restaurant Figures

Totals	Winslow	Holbrook	Snowflake	Taylor	Show Low	Pinetop-Lakeside	Heber-Overgaard	Hon-Dah McNary
Fast Food	10	5	5	3	15	6		
Restaurants	19	25	13	4	29	43	14	2
Coffee	1				1	3		
Total:	30	30	18	7	46	52	14	2

Winslow

Name	Address	Phone
Alfonso's Mexican Food	1503 N Park Dr., Winslow, AZ 86047	(928) 289-1233
Arby's	400 Mike's Pike St., Winslow, AZ 86047	(928) 289-5565
Bojo's Grill & Sports Club	117 W 2nd St., Winslow, AZ 86047	(928) 289-0616
Brown Mug Café	308 E 2nd St., Winslow, AZ 86047	(928) 289-9973
Captain Tony's Pizza & Pasta	2217 N Park Dr., Winslow, AZ 86047	(928) 332-8669
Casa Blanca Café	1201 E 2nd St., Winslow, AZ 86047	(928) 289-4191
China Feast	918 E 2nd St., Winslow, AZ 86047	(928) 289-4191
Church's Chicken	300 E 2nd St., Winslow, AZ 86047	(928) 289-2515
Dairy Queen	1304 E 2nd St., Winslow, AZ 86047	(928) 289-3282
Darrel's Root Beer Stand	1001 N Williamson Ave., Winslow, AZ 86047	(928) 289-2891
Denny's	410 Mike's Pike, Winslow, AZ 86047	(928) 289-5117
DJ's	1701 N Park Dr., Winslow, AZ 86047	(928) 289-4638
Domino's Pizza	1525 N Park St., Winslow, AZ 86047	(928) 289-4545
El Torito	908 Central St., Winslow, AZ 86047	(928) 289-2714
E & O Kitchen	703 Airport Rd., Winslow, AZ 86047	(928) 289-5352
Entre Restaurant	1919 W 2nd St., Winslow, AZ 86047	(928) 289-2141
Falcon Restaurant & Lounge	1113 W 3rd St., Winslow, AZ 86047	(928) 289-2628
Flying J Travel Plaza	400 Transcon Lane, Winslow, AZ 86047	(928) 289-2081
KFC	510 W Desmond St., Winslow, AZ 86047	(928) 289-4155
La Posada Hotel, (Turquoise Room Restaurant)	303 E 2nd St., Winslow, AZ 86047	(928) 289-4366/2888
McDonald's	1616 N Park Dr., Winslow, AZ 86047	(928) 289-5710

Mi Pueblo	3 Transcon Lane, Winslow, AZ 86047	(928) 289-2665
Mojo Café	1700 N Park Dr., Winslow, AZ 86047	(928) 289-6656

Restaurants

Winslow (continued)

Name	Address	Phone
Pizza Hut	600 Mike's Pike, Winslow, AZ 86047	(928) 289-2445
Senor D's Mexican Café	2201 N Park Dr., Winslow, AZ 86047	(928) 289-9534
Sonic Drive-In	1520 E 2nd St., Winslow, AZ 86047	(928) 289-3278
Subway	1503 N Park Dr., Winslow, AZ 86047	(928) 289-5758
Taco Bell	1605 N Park Dr., Winslow, AZ 86047	(928) 289-4212
Triple R's	1308 E 3 rd St., Winslow, AZ 86047	(928) 289-6715
The Seattle Grind	106 E 2nd St., Winslow, AZ 86047	(928) 289-2859

Source: <http://www.winslowarizona.org/>Source: <http://www.restaurantdb.net/>

Holbrook

Name	Address	Phone
Aliberto's Mexican Food	1440 Navajo Blvd., Holbrook, AZ 86025	(928) 524-7899
Alley's Subs & More	2423 E Navajo Blvd., Holbrook, AZ 86025	(928) 524-1445
Arizona Country Café	Jct. Hwy 77 & I-40, Holbrook, AZ 86025	(928) 524-2686
Bubba's Big Pig Bar Ba Que	1002 W Hopi Dr., Holbrook, AZ 86025	(928) 524-1581
Burger King	1440 Navajo Blvd., Holbrook, AZ 86025	(928) 524-3747
Butterfield Stage Co Steak House	609 W Hopi Dr., Holbrook, AZ 86025	(928) 524-3447
Country Host Restaurant	3747 Express Dr., Holbrook, AZ 86025	(928) 524-3010
Dairy Queen	1004 Navajo Blvd., Holbrook, AZ 86025	(928) 524-6553
Denny's	2510 Navajo Blvd., Holbrook, AZ 86025	(928) 524-2893
El Rancho Restaurant	867 Navajo Blvd., Holbrook, AZ 86025	(928) 524-3332
Farr's A & W	101 W Hopi Dr., Holbrook, AZ 86025	(928) 524-2841
Green Team Restaurant	101 E Hopi Dr., Holbrook, AZ 86025	(928) 524-1515
Hilltop Café	2105 Navajo Blvd., Holbrook, AZ 86025	(928) 524-6234
Hopi Travel Plaza	900 Navajo Blvd., Holbrook, AZ 86025	(928) 524-6243
Irene's Spurs and Saddles Restaurant	720 Navajo Blvd., Holbrook, AZ 86025	(928) 524-3301
Jerry's Restaurant	2600 Navajo Blvd., Holbrook, AZ 86025	(928) 524-2364
Joe & Aggie's Café	120 W Hopi Dr., Holbrook, AZ 86025	(928) 524-6540
KFC	1635 Navajo Blvd., Holbrook, AZ 86025	(928) 524-3179

Mandarin Beauty Chinese Restaurant	2218 Navajo Blvd., Holbrook, AZ 86025	(928) 524-3663
McDonald's	1623 Navajo Blvd., Holbrook, AZ 86025	(928) 524-3938

Restaurants

Holbrook (continued)

Name	Address	Phone
Mesa Italian Restaurant	2318 Navajo Blvd., Holbrook, AZ 86025	(928) 524-6696
Mr. Maestras' Café	502 Navajo Blvd., Holbrook, AZ 86025	(928) 524-6000
Pizza Hut	2001 Navajo Blvd., Holbrook, AZ 86025	(928) 524-2216
Roadrunner Café	1501 E Navajo Blvd., Holbrook, AZ 86025	(928) 524-2787
Romo's Restaurant	121 W Hopi Dr., Holbrook, AZ 86025	(928) 524-2153
Suzie's Café & Gifts	125 W Erie St., Holbrook, AZ 86025	(928) 524-2132
Taco Bell	1606 Navajo Blvd., Holbrook, AZ 86025	(928) 524-3377
The Hanger Steakhouse	108 Crestview Dr., Holbrook, AZ 86025	(928) 524-3411
The Plainsman Restaurant	1001 W Hopi Dr., Holbrook, AZ 86025	(928) 524-3345
Wayside Café	1150 W Hopi Dr. , Holbrook, AZ 86025	(928) 524-3167

Source: <http://www.restaurantdb.net/>Source: <http://www.wmonline.com/>

Snowflake

Name	Address	Phone
Amelia's Garden	305 S. Main St., Snowflake, AZ 85937	(928) 536-2046
Bits & Pizzas	418 S Main St., Snowflake, AZ 85937	(928) 536-4005
El Cupidos Express	379 S Main St. , Snowflake, AZ 85937	(928) 536-2522
El Rancho	680 S Main St., Snowflake, AZ 85937	(928) 536-4139
Enzo's	411 W 3rd St. N, Snowflake, AZ 85937	(928) 243-0450
Eva's Restaurant	201 N Main St., Snowflake, AZ 85937	(928) 536-7683
Heritage Antiques & Creamery	123 N Main St., Snowflake, AZ 85937	(928) 536-3741
La Cocina de Eva	60 S Main St., Snowflake, AZ 85937	(928) 536-7683
McDonald's	380 S Main St., Snowflake, AZ 85937	(928) 536-7763
Nedra's Café	165 N Main St. , Snowflake, AZ 85937	(928) 643-7591
Old West Café	501 S Main St., Snowflake, AZ 85937	(928) 536-7386
Osmer D. Heritage Inn	161 N Main St., Snowflake, AZ 85937	(928) 536-3322
The Westside Inn	290 N Country Club, Snowflake, AZ 86937	(928) 536-7237

Source: <http://www.snowflaketaylorchamber.org/>Source: <http://www.wmonline.com/>Source: <http://www.restaurantdb.net/>

Restaurants

Taylor

Name	Address	Phone
Arby's	875 N. Main St., Taylor, AZ 85939	(928) 536-9199
China Plaza	696 N Main St., Taylor, AZ 85939	(928) 536-3465
Dairy Queen	615 N. Main St., Taylor, AZ 85939	(928) 536-9664
Grumpy Jake's	615 N. Main St., Taylor, AZ 85939	(928) 536-2676
Pizza Hut	620 N Main St. , Taylor, AZ 85939	(928) 536-2212
Sonic Drive-In	202 N Main St., Taylor, AZ 85939	(928) 536-2077
Subway	815 N Main St., Taylor, AZ 85939	(928) 536-4749
Taco Bell	716 N Main St., Taylor, AZ 85939	(928) 536-4475
Trapper's Café	9 S Main St., Taylor, AZ 85939	(928) 536-7758

Source: <http://www.wmonline.com/>

Show Low

Name	Address	Phone
Aliberto's, (Downtown 9 Motel)	1457 E Deuce of Clubs, Show Low, AZ 85901	(928) 537-4334
Arby's	680 W Deuce of Clubs , Show Low, AZ 85901	(928) 537-4413
Asia Garden Restaurant	59 W Deuce of Clubs, Show Low, AZ 85901	(928) 537-9333
Aunt Nancy's Family Restaurant	21 N 9th St., Show Low, AZ 85901	(928) 537-4839
Burger King	100 N Central Ave., Show Low, AZ 85901	(928) 537-5828
Café Bacado	4551 S White Mountain Blvd., Ste. 2, Show Low, AZ 85929	(928) 537-8190
China Café	1201 E Deuce of Clubs, Show Low, AZ 85901	(928) 537-5407
China Wok Buffet	4411 S White Mountain Rd., Show Low, AZ 85901	(928) 532-8383
Coffee Mania	1131 E Deuce of Clubs, Show Low, AZ 85901	(928) 532-5078
Dairy Queen	160 E Deuce of Clubs, Show Low, AZ 85901	(928) 537-2446
Days Inn	480 W Deuce of Clubs, Show Low, AZ 85901	(928) 537-4356
Denny's	4471 S White Mountain Rd., Show Low, AZ 85901	(928) 537-9725
Domino's Pizza	1240 E Deuce of Clubs, Show Low, AZ 85901	(928) 532-5534
Fiesta Mexicana	350 E Deuce of Clubs, Show Low, AZ 85901	(928) 532-3424
Galley at Juniper Ridge	1911 Juniper Ridge Dr., Show Low, AZ 85901	(928) 532-6331
Grumpy Jakes BBQ	5647 White Mountain Blvd., Show Low, AZ 85929	(928) 532-2266
High in the Pines Delicatessen	1191 E Hall, Show Low, AZ 85901	(928) 537-1453

Horse's Ghost Café	2105 E Deuce of Clubs, Show Low, AZ 85901	(928) 537-8548
---------------------------	---	----------------

Restaurants**Show Low (continued)**

Name	Address	Phone
JB's Restaurant	480 W Deuce of Clubs, Show Low, AZ 85901	(928) 532-1266
Jack in the Box	4435 S White Mountain Rd., Show Low, AZ 85901	(928) 537-0696
KFC	180 N White Mountain Rd., Show Low, AZ 85901	(928) 537-2124
La Casita	5000 S White Mountain Rd., Show Low, AZ 85901	(928) 537-5179
Licano's Mexican Food	573 W Deuce of Clubs, Show Low, AZ 85901	(928) 537-8220
Little Caesar's Pizza	1651 E Deuce of Clubs, Show Low, AZ 85901	(928) 537-0163
Loco Jalapenos	350 Deuce of Clubs, Show Low, AZ 85901	(928) 537-9272
Mateos Mexican Grill	4817 S White Mountain Blvd., Show Low, AZ 85901	(928) 537-8828
McDonald's	5401 S White Mountain Rd., Show Low, AZ 85901	(928) 537-8802
McDonald's	221 N White Mountain Rd., Show Low, AZ 85901	(928) 537-7609
Mountain Top Café	10 W Old Linden Road, Show Low, AZ 85901	(928) 537-8800
Native New Yorker	391 Deuce of Clubs, Show Low, AZ 85901	(928) 532-5100
Noble Roman's	1600 W Deuce of Clubs, Show Low, AZ 85901	(928) 537-2539
Papa John's Pizza	5171 Cub Lake Rd., Show Low, AZ 85901	(928) 532-7272
Pizza Factory	100 N White Mountain Rd. Ste. 10, Show Low, AZ 85901	(928) 537-7771
Pizza Hut	4481 S White Mountain Rd., Show Low, AZ 85901	(928) 537-5306
Ponderosa Express	161 E Deuce of Clubs, Show Low, AZ 85901	(928) 537-1166
Quizno's Subs	5171 Cub Lake Rd., Show Low, AZ 85901	(928) 537-7827
RT's Black Bull	4481 S White Mountain Rd., Ste. 2, Show Low, AZ 85901	(928) 537-5581
Samuri Sams Teriyaki Grill	5171 Cub Lake Rd., Show Low, AZ 85901	(928) 532-7267
Sonic Drive-In	480 W Deuce of Clubs, Show Low, AZ 85901	(928) 537-0624
Subway Sandwiches & Salads	161 E Deuce of Clubs #161, Show Low, AZ 85901	(928) 537-7862
Taco Bell	4425 S White Mountain Rd., Show Low, AZ 85901	(928) 537-3366
The Branding Iron Steakhouse	1261 E Deuce of Clubs, Show Low, AZ 85901	(928) 537-5151
Torreón Golf Club	651 S Torreón Loop, Show Low, AZ 85901	(928) 532-8000
Waldo's Barbeque	1201 E. Hall St., Show Low, AZ 85901	(928) 537-1453
Wendy's	5201 S White Mountain Rd., Show Low, AZ 85901	(928) 537-7293
White Mountain Restaurant	2101 E Deuce of Clubs, Show Low, AZ 85901	(928) 537-9880

Source: <http://www.showlowchamberofcommerce.com/>Source: <http://www.wmonline.com/>Source: <http://www.restaurantdb.net/>

Restaurants

Pinetop-Lakeside

Name	Address	Phone
Alberto's Mexican Food	544 E White Mountain Blvd., Pinetop, AZ 85935	(928) 367-6364
Brickman's Grill & Bar	1450 E White Mountain Blvd., Pinetop, AZ 85935	(928) 367-7400
Burger King	365 E White Mountain Blvd., Pinetop, AZ 85935	(928) 367-2565
Capt'n Ron's	674 E White Mountain Blvd., Pinetop, AZ 85935	(928) 367-8989
Charlie Clark's Steak House	1701 E White Mountain Blvd., Pinetop, AZ 85935	(928) 367-4900
Darbi's Café	235 E White Mountain Blvd., Pinetop, AZ 85935	(928) 367-6556
El Farol	436 E White Mountain Blvd./PO Box 144, Pinetop, AZ 85935	(928) 367-4569
El Rancho Pinetop	1523 E White Mountain Blvd., Pinetop, AZ 85935	(928) 367-4557
Hilltop House Restaurant	577 E White Mountain Blvd., Pinetop, AZ 85935	(928) 367-4617
Kabuki of Pinetop	814 E White Mountain Blvd., Pinetop, AZ 85935	(928) 367-2167
Little Ceasars Pizza	746 E White Mountain Blvd., Pinetop, AZ 85935	(928) 637-0177
Los Carrales	845 E White Mountain Blvd., Pinetop, AZ 85935	(928) 367-5585
Lotus Garden Chinese Restaurant	984 E White Mountain Blvd., Pinetop, AZ 85935	(928) 367-2568
Munich Haus	1443 E Fir Lane, Pinetop, AZ 85935	(928) 367-4287
Pasta House Company	2188 E White Mountain Blvd., Pinetop, AZ 85935	(928) 367-2782
Pinetop Lakes Golf & Country Club	4643 Bucksprings Rd., Pinetop, AZ 85935	(928) 369-4531
Red Devil Pizza	1774 E White Mountain Blvd., Pinetop, AZ 85935	(928) 367-5570
Taco Bell	127 W White Mountain Blvd., Pinetop, AZ 85935	(928) 367-0496
The Lion's Den	2408 E White Mountain Blvd., Pinetop, AZ 85935	(928) 367-6050
Big Apple Bagels/Marble Slab	1477 W White Mountain Blvd, Lakeside, AZ 85929	(928) 368-2021
Chalet Restaurant & Bar	348W White Mountain Blvd., Lakeside, AZ 85929	(928) 367-1514
Chuckwagon Steak House	4048 Porter Mountain Rd., Lakeside, AZ 85929	(928) 368-5800
El Cupidos Mexican Food	1676 W White Mountain Blvd., Lakeside, AZ 85929	(928) 368-5022
Hide Away Café	3068 W Hwy 260, Lakeside, AZ 85929	(928) 368-2206
KFC	44 E White Mountain Blvd., Lakeside, AZ 85929	(928) 367-5566
Mama Bears	2251 W White Mountain Blvd., Lakeside, AZ 85929	(928) 368-2251
McDonald's	6 W White Mountain Blvd., Lakeside, AZ 85929	(928) 367-6126
Mountain Thai Restaurant	5767 Hwy 260, Lakeside, AZ 85929	(928) 368-4148
Pizzeria Venti	1477 W White Mountain Blvd., Lakeside, AZ 85929	(928) 368-2030
Starbucks	20 W White Mountain Blvd., Lakeside, AZ 85929	(928) 367-6677

Restaurants

Pinetop-Lakeside (continued)

Name	Address	Phone
Subway Sandwiches & Salads	20 E White Mountain Blvd., Lakeside, AZ 85929	(928) 367-2224
The Lodge Sports Bar & Grill	857 E White Mountain Blvd., Lakeside, AZ 85929	(928) 367-2333
The Village Deli	476 W White Mountain Blvd., Lakeside, AZ 85929	(928) 367-3354

Source: <http://www.restaurantdb.net/>Source: <http://www.wmonline.com/>

Heber-Overgaard

Name	Address	Phone
1893 Steak House	1893 Hwy 260/PO Box 262, Heber, AZ 85928	(928) 535-5660
Al & Diane's Red Onion Lounge	1931 Hwy 260, Heber, AZ 85928	(928) 535-4433
Café Ramos	1855 Hwy 260, Heber, AZ 85928	(928) 535-4448
June's Diner	1986 Hwy 260, Heber, AZ 85928	(928) 535-4510
Nik-L-Nick's Restaurant	1846 Hwy 260, Heber, AZ 85928	(928) 535-9454
Rim Café	1935 Hwy 260, Heber, AZ 85928	(928) 535-4007
Sassy's Café	1828 Hwy 260, Heber, AZ 85928	(928) 535-3663
Chapparral Café	3065 Hwy 277, Overgaard, AZ 85933	(928) 535-5005
Chuckwagon Grill & Wild Womens Saloon	2381 Hwy 260/PO Box 1227, Overgaard, AZ 85933	(928) 535-5995
Pine Meadows Country Club	2209 Country Club Lane, Overgaard, AZ 85933	(928) 535-4110
Pit Stop Pizza	2232 Hwy 260/PO Box 1048, Overgaard, AZ 85933	(928) 535-5711
Pizza Time	2767 Hwy 260, Overgaard, AZ 85933	(928) 535-4458
The Cabin Bar & Grill	2763 Hwy 260/PO Box 1026, Overgaard, AZ 85933	(928) 535-6117
Twinnie's Coffee Break and Ice Cream Parlor	2269 Hwy 260/PO Box 1351, Overgaard, AZ 85933	(928) 535-6281

Source: <http://www.wmonline.com/>Source: <http://www.restaurantdb.net/>

Hon-Dah McNary

Name	Address	Phone
Indian Pine Restaurant , (Hon-Dah Resort)	777 Hwy 260, Pinetop, AZ 85935	(928) 929-8744

Source: <http://www.hon-dah.com/>

Whiteriver

Name	Address	Phone
White River Apache Motel & Restaurant	1109 S Chief Ave., Whiteriver, AZ 85941	(928) 338-4927

Conference / Meeting Facilities**Winslow**

Name	Address	Phone	No. of Rooms	C/M Rooms	C/M Capacity
Bojo's Grill & Sports Club	117 W 2nd St. Winslow, AZ 86047	(928) 289-0616			
Comfort Inn	1701 N Park Dr. Winslow, AZ 86047	(928) 289-4638	72	1	<50
Falcon Family Restaurant	1113 E 3rd St. Winslow, AZ 86047	(928) 289-2628			100
La Posada Hotel	303 E 2nd St. Winslow, AZ 86047	(928) 289-4366	37	1	50
The Lodge	1914 W 3rd St. Winslow, AZ 86047	(928) 289-4611	68	1	200

Source: Winslow Chamber of Commerce

Holbrook

Name	Address	Phone	No. of Rooms	C/M Rooms	C/M Capacity
Best Western Arizonian Inn	2508 Navajo Blvd Holbrook, AZ 86025	(928) 524-2611	70	1	25+
Bubba's Big Pig Bar Ba Que	1002 W Hopi Dr. Holbrook, AZ 86025	(928) 524-1581		1	45-50
El Rancho Restaurant	867 Navajo Blvd. Holbrook, AZ 86025	(928) 524-3332		1	30
Holiday Inn Express	1308 E Navajo Blvd Holbrook, AZ 86025	(928) 524-1466	59	1	35
Mesa Italian Restaurant	2318 Navajo Blvd. Holbrook, AZ 86025	(928) 524-6696			

Source: Holbrook Chamber of Commerce

Source: <http://www.hotelandtravelindex.travelweekly.com/>

Conference / Meeting Facilities

Snowflake

Name	Address	Phone	No. of Rooms	C/M Rooms	C/M Capacity
Comfort Inn Snowflake	2055 S Main St. Snowflake, AZ 85937	(928) 536-3888	64	2	80
Northland Pioneer College	1611 S. Main Snowflake, AZ	(928) 536-6211			

Source: <http://www.hotelandtravelindex.travelweekly.com/>

Taylor

Name	Address	Phone	No. of Rooms	C/M Rooms	C/M Capacity
Northeast Arizona Training Center	1840 W. Papermill Taylor, AZ	(928) 243-4898			
Planet Pasta	630 N. Main Taylor, AZ	(928) 536-5374			
Town of Taylor	425 Papermill Rd, Taylor, AZ	(928) 536-7366			
Trappers Café	9 S Main St., Taylor, AZ	(928) 536-7758			

Show Low

Name	Address	Phone	No. of Rooms	C/M Rooms	C/M Capacity
Asia Gardens	59 W Deuce of Clubs Show Low, AZ 85901	(928) 537-9333			45
Camp Grace	6385 S White Mountain Blvd. PO Box 1373 Pinetop, AZ 85935	(928) 537-1252			130
Days Inn	480 W Deuce of Clubs Show Low, AZ 85901	(928) 537-4356	122	1	60
Hampton Inn	1501 East Woolford Road Show Low, AZ 85901	(928) 532-4444	73	1 Can be split in 2	120–200

Holiday Inn Express	151 Deuce of Clubs Show Low, AZ 85901	(928) 537-5115	71	1	35
----------------------------	--	----------------	----	---	----

Conference / Meeting Facilities**Show Low (continued)**

Name	Address	Phone	No. of Rooms	C/M Rooms	C/M Capacity
J.B.'s Restaurant	480 W Deuce of Clubs Show Low, AZ 85901	(928) 532-1266			45
La Casita Café	5000 S White Mountain Rd. Show Low, AZ 85901	(928) 537-5179			30
Licano's	573 W Deuce of Clubs Show Low, AZ 85901	(928) 537-8220			180
Pat's Place	981 E Deuce of Clubs Show Low, AZ 85901	(928) 537-2337			90
RT's Black Bull	4481 S White Mountain Rd., Ste. 2 Show Low, AZ 85901	(928) 537-5581			100
Sleep Inn	1751 W Deuce of Clubs Show Low, AZ 85901	(928) 532-7323	70		50
The Branding Iron Steakhouse	1261 E Deuce of Clubs Show Low, AZ 85901	(928) 537-5151			45
Thunder Raceway	4701 E Deuce of Clubs Show Low, AZ 85901	(928) 537-1111			Outdoor
Torreon	651 S Torreon Loop Show Low, AZ 85901	(928) 532-8000			130

Source: Show Low Chamber of Commerce

Source: <http://www.hotelandtravelindex.travelweekly.com/>Source: <http://maps.google.com/>

Conference / Meeting Facilities**Pinetop-Lakeside**

Name	Address	Phone	No. of Rooms	C/M Rooms	C/M Capacity
Holiday Inn Express	431 E White Mountain Blvd Pinetop, AZ 85935	(928) 367-6077	40	1	25
Sierra Springs Ranch LLC	101 Sky Hi Pinetop, AZ 85935	(928) 369-3900			230
Chuckwagon Steak House	4048 Porter Mountain Rd. Lakeside, AZ 85929	(928) 368-5800			150
Charlie Clark's Steakhouse	1701 S White Mountain Rd. Pinetop, AZ 85935	(928) 367-4900		2	60 & 12
Thunderhorse Ranch	P.O. Box 2065 Lakeside, AZ 85929				350

Source: Show Low Chamber of Commerce

Source: <http://www.hotelandtravelindex.travelweekly.com/>**Heber-Overgaard**

Name	Address	Phone	No. of Rooms	C/M Rooms	C/M Capacity
Sassy's Café	1828 Hwy 260 Heber, AZ 85928	(928) 535-3663	1		50
Bison Ranch Retreat Center	Overgaard, AZ 85933	(928) 535-6789/(480) 748-3335			300
Bison Ranch Resort Suites	2341 Quarter Horse Trail/PO Box 2365 Overgaard, AZ 85933	(928) 535-6990	86	6	20-50 Pavilion-300

Source: <http://www.bisonranchretreat.com/>Source: <http://www.bisonranchsuites.com/>**Hon-Dah McNary**

Name	Address	Phone	No. of Rooms	C/M Rooms	C/M Capacity
Hon-Dah Resort	777 Hwy 260 Pinetop, AZ 85935	(928) 369-0299 (800) 929-8744	128	6	700
Sunrise Park Lodge	Hwy 273/PO Box 117 Hon-Dah McNary, AZ 85930	(928) 735-7669	100		200

Source: <http://www.sunriseskipark.com/>Source: <http://www.hon-dah.com/>

Quick Contents

Credits	3	Railroads.....	42
Enterprise Zone Incentives.....	7	Airports.....	42
Economic Development Organizations	7	Distances from Major Markets.....	42
Chambers of Commerce.....	7	Cellular Phone Service	44
Population.....	9	Banks and Credit Unions	44
Labor Force	9	Express Shipping Providers.....	45
Age & Race	12	Public Lands.....	50
Income	14	Industrial/Business Sites.....	53
Workforce Housing	16	Industrial Development Authority.....	53
Commuting to Work.....	17	Taxes.....	53
Major Public Employers	18	Weather	55
Major Private Employers.....	19	Cultural Amenities.....	64
Public Schools.....	20	Medical Services / Providers	67
Private/Charter Schools	27	Dentists	67
Vocational Schools	29	Crime	68
Northland Pioneer College	32	Occurrences of Crimes (2005)	68
Northern Arizona University	39	Natural Resources	69
Electricity.....	40	Hotel & Motels	70
Natural Gas	41	RV Park & Campground Facilities	80
Water	41	Restaurants	85
Wastewater.....	41	Conference / Meeting Facilities	93
Sanitation / Solid Waste.....	41		